

TECHNICAL MANUAL
UNIT AND DIRECT SUPPORT MAINTENANCE
REPAIR PARTS AND SPECIAL TOOLS LIST
FOR
TANK, FABRIC, COLLAPSIBLE POL

3K 5430-00-268-8187 (MODEL M52983-03)
3K 5430-01-433-8528 (MODEL WTM3KF)
10K 5430-00-052-3412 (MODEL FCE574-81-1-A)
10K 5430-01-358-6157 (MODEL BA91-141)
10K 5430-01-414-9521 (MODEL BA91-141A)
10K (EXTRA ACCESSORIES) 5430-00-641-8552
20K 5430-01-215-7525 (MODEL BA92-162)
20K 5430-01-359-4943 (MODEL BA91-140)
20K 5430-01-414-9252 (MODEL BA91-140A)
50K 5430-00-182-8181 (MODEL M52983-50)
50K 5430-01-455-5676 (MODEL PD52983-50)
5K BBL 5430-01-160-3528 (MODEL PD5430-0001)

DISTRIBUTION STATEMENT A: Approved for public release; distribution is unlimited.

***This manual supersedes TM 5-5430-219-23P, dated 31 Aug 88**

HEADQUARTERS, DEPARTMENT OF THE ARMY
31 JANUARY 2000

TECHNICAL MANUAL
NO. 5-5430-219-23P

HEADQUARTERS
DEPARTMENT OF THE ARMY
WASHINGTON, D.C., 31 JANUARY 2000

**UNIT AND DIRECT SUPPORT MAINTENANCE
REPAIR PARTS AND SPECIAL TOOLS LIST**

- TANK, FABRIC, COLLAPSIBLE, POL**
3K 5430-00-268-8187 (MODEL M52983-03)
3K 5430-01-433-8528 (MODEL WTM3KF)
10K 5430-00-052-3412 (MODEL FCE574-81-1-A)
10K 5430-01-358-6157 (MODEL BA91-141)
10K 5430-01-414-9521 (MODEL BA91-141A)
10K (EXTRA ACCESSORIES) 5430-00-641-8552
20K 5430-01-215-7525 (MODEL BA92-162)
20K 5430-01-359-4943 (MODEL BA91-140)
20K 5430-01-414-9252 (MODEL BA91-140A)
50K 5430-00-182-8181 (MODEL M52983-50)
50K 5430-01-455-5676 (MODEL PD52983-50)
5K BBL 5430-01-160-3528 (MODEL PD5430-0001)

Current as of 13 January 2000

REPORTING ERRORS AND RECOMMENDING IMPROVEMENTS

You can help improve this publication. If you find any mistakes or if you know of a way to improve the procedures, please let us know. Submit your DA Form 2028-2 (Recommended Changes to Equipment Technical Publications), through the Internet, on the Army Electronic Product Support (AEPS) website. The Internet address is <http://aeps.ria.army.mil>. If you need a password, scroll down and click on "ACCESS REQUEST FORM". The DA Form 2028 is located in the ONLINE FORMS PROCESSING section of the AEPS. Fill out the form and click on SUBMIT. Using this form on the AEPS will enable us to respond quicker to your comments and better manage the DA Form 2028 program. You may also mail, fax or email your letter, DA Form 2028, or DA Form 2028-2 direct to: Commander, U.S. Army Tank-automotive and Armaments Command, ATTN: AMSTA-AC-NML, Rock Island, IL 61299-7630. The email address is amsta-ac-nml@ria.army.mil. The fax number is DSN 793-0726 or Commercial (309) 7820726.

DISTRIBUTION STATEMENT A: Approved for public release; distribution is unlimited

TABLE OF CONTENTS

	PAGE	ILLUS/ FIGURE
Section I Introduction	1	
Section II Repair Parts List.....	1-1	
Group 00 Tank, Fabric Collapsible		
Group 01 Valve Assembly, Filler and Discharge	1-1	
Filler and Discharge Valve Assembly	1-1	1
Gate Valve	2-1	2
Discharge Valve Assembly (Butterfly Valve).....	3-1	3
Butterfly Valve	4-1	4

* This manual supersedes TM 5-5430-219-23P, dated 31 AUGUST 1988

	PAGE	ILLUS/ FIGURE
Group 02 Discharge Valve Assembly (Ball Valve).....	5-1	5
Group 02 Hose Assembly, Filler and Discharge	6-1	
Group 03 Filler and Discharge Hose Assembly	6-1	6
Group 03 Valve, Gate, Drain	7-1	
Group 03 Drain Gate Valve	7-1	7
Group 04 Drain Ball Valve	8-1	8
Group 04 Hose Assembly, Drain	9-1	
Group 05 Drain Hose Assembly.....	9-1	9
Group 05 Vent and Pipe Assembly	10-1	
Group 06 Vent and Pipe Assembly	10-1	10
Group 06 Assembly, Filler/Discharge	11-1	
Group 07 Filler/Discharge Assembly	11-1	11
Group 07 Fitting Assembly, Drain	12-1	
Group 08 Drain Fitting Assembly	12-1	12
Group 08 Drain Fitting Assembly	13-1	13
Group 08 Tank	14-1	
Group 09 Tank	14-1	14
Group 09 Repair Items, Emergency	15-1	
Group 09 Emergency Repair Items	15-1	15
Section III Special Tools List (Not Applicable)		
Section IV Cross Reference Indexes		
National Stock Number Index	I-1	
Part Number Index	I-3	

Section I. INTRODUCTION

C-1. SCOPE. This RPSTL lists and authorizes spares and repair parts, special tools, special test, measurement, and diagnostic equipment (TMDE), and other special support equipment required for performance of unit, direct support and general support maintenance of all sizes of Collapsible Fabric Fuel Tanks It authorizes the requisitioning, issue, and disposition of spares, repair parts and special tools as indicated by the source, maintenance and recoverability (SMR) codes.

C-2. GENERAL. In addition to this section, Introduction, this Repair Parts and Special Tools List is divided into the following sections:

a. Section II. Repair Parts List. A list of spares and repair parts authorized by this RPSTL for use in the performance of maintenance. This list also includes parts which must be removed for replacement of the authorized parts. Parts lists are composed of functional groups in ascending alphanumeric sequence, with the parts in each group listed in ascending figure and item number sequence. Bulk materials are listed in item name sequence in FIG. BULK at the end of the section. Repair kits are listed separately in their own functional group within Section II. Items are shown in the associated illustration.

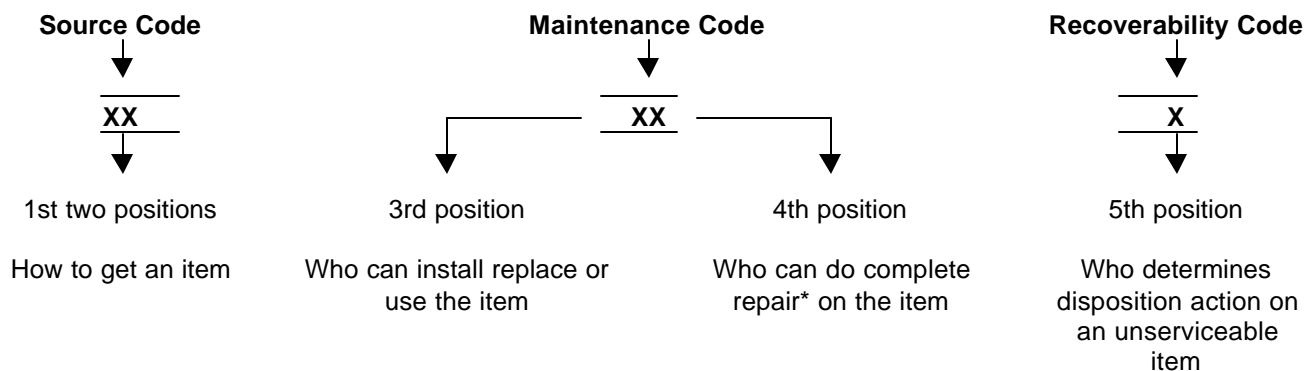
b. Section III. Special Tools List. A list of special tools, special TMDE, and special support equipment authorized by this RPSTL (as indicated by Basis of Issue (BOI) information in DESCRIPTION AND USABLE ON CODE column) for the performance of maintenance.

c. Section IV. Cross-Reference Index. There are two cross reference indexes in this RPSTL: The National Stock Number Index, listed in the National Item Identification Number sequence and the Part Number Index, listed in alphanumeric sequence of part numbers appearing in the listing. National stock numbers and part numbers are cross referenced to each illustration figure and item number appearance.

C-3. EXPLANATION OF COLUMNS (SECTIONS II AND III).

a. ITEM NO. (Column (1)). Indicates the number used to identify items called out on the illustration.

b. SMR Code (Column (2)). The Source, Maintenance, and Recoverability (SMR) code is a 5-position code containing supply/requisitioning information, maintenance level authorization criteria, and disposition instruction, as shown in the following breakout:



* Complete Repair: Maintenance capacity, capability, and authority to perform all corrective maintenance tasks of the "Repair" function in a use/user environment in order to restore serviceability to a failed item.

(1) Source Code. The source code tells you how to get an item needed for maintenance, repair, or overhaul of an end item/equipment. Explanations of source codes follows:

Source Code	Application/Explanation
PA PB PC** PD PE PF PG	<p>Stock items; use the applicable NSN to request/requisition items with these source codes. They are authorized to the category indicated by the code entered in the 3rd position of the SMR code.</p> <p>**NOTE: Items coded PC are subject to deterioration.</p>
KD KF KB	<p>Items with these codes are not to be requested/requisitioned individually. They are part of a kit which is authorized to the maintenance level indicated in the 3rd position of the SMR code. The complete kit must be requisitioned and applied.</p>
MO (Made at Unit/AVUM Level) MF MH (Made at GS Level) ML (Made at Specialized Repair Activity (SRA)) MD (Made at Depot)	<p>Items with these codes are not to be requested/requisitioned individually. They must be made from bulk material which is identified by the part number in the DESCRIPTION and USABLE ON CODE (UOC) column and listed in the Bulk Material group of the repair parts list in the RPSTL. If the item is authorized to you by the 3rd position code of the SMR code, but the source code indicates it is made at a higher level, order the item from the higher level of maintenance.</p>
AO (Assembled by Unit/AVUM Level) AF (Assembled by DS/AVIM Level) AL (Assembled by SRA) AD (Assembled by Depot)	<p>Items with these codes are not to be requested/requisitioned in dividually. The parts that make up the assembled item must be requisitioned or fabricated and assembled at the level of maintenance indicated by the source code. If the 3rd position code of the SMR code authorizes you to replace the item, but the source code indicates the items are assembled at a higher level, order the item from the higher level of maintenance.</p>
XA	Do not requisition an "XA"-coded item Order its next higher assembly. (Refer to the NOTE below.)
XB	If an "XB" item is not available from salvage, order it using the CAGEC and part number.
XC	Installation drawing, diagrams, instruction sheet, field service drawing, that is identified by manufacturer's part number.
XD	Item is not stocked. Order an "XD"-coded item through normal supply channels using the CAGEC and part number given, if no NSN is available.

NOTE

Cannibalization or controlled exchange, when authorized, may be used as a source of supply for items with the above source codes, except for those source coded "XA" or those aircraft support items restricted by requirements of AR 750-1.

(2) Maintenance Code. Maintenance codes tell you the level(s) of maintenance authorized to USE and REPAIR support items. The maintenance codes are entered in the third and fourth positions of the SMR code as follows:

(a) The maintenance code entered in the third position tells you the lowest maintenance level authorized to remove, replace, and use the item. The maintenance code entered in the third position will indicate authorization to the following levels of maintenance.

Maintenance Code	Application/Explanation
C	- Crew or operator maintenance done within unit/AVUM maintenance.
O	- Unit level/AVUM maintenance can remove, replace, and use the item.
F	- Direct support/AVIM maintenance can remove, replace, and use the item.
H	- General support maintenance can remove, replace, and use the item.
L	- Specialized repair activity can remove, replace, and use the item.
D	- Depot can remove, replace, and use the item

(b) The maintenance code entered in the fourth position tells whether or not the item is to be repaired and identifies the lowest maintenance level with the capability to do complete repair (i.e, perform all authorized repair functions.)

NOTE

Some limited repair may be done on the item at a lower level of maintenance, if authorized by the Maintenance Allocation Chart and SMR code.

Maintenance Code	Application/Explanation
O	- Unit/AVUM is the lowest level that can do complete repair of the item.
F	- Direct support/AVIM is the lowest level that can do complete repair of the item.
H	- General Support is the lowest level that can do complete repair of the item.
L	- Specialized repair activity is the lowest level that can do complete repair of the item.
D	- Depot is the lowest level that can do complete repair of the item.
Z	- Nonreparable. No repair is authorized.
B	- No repair is authorized. No parts or special tools are authorized for the maintenance of a "B" coded item. However, the item may be reconditioned by adjusting, lubricating, etc, at the user level.

(3) Recoverability Code. Recoverability codes are assigned to items to indicate the disposition action on unserviceable items. The recoverability code is shown in the fifth position of the SMR Code as follows:

Recoverability Codes	Application/Explanation
Z	- Nonreparable item. When unserviceable, condemn and dispose of the item at the level of maintenance shown in 3rd position of SMR Code.
O	- Repairable item. When uneconomically repairable, condemn and dispose of the item at unit or AVUM level.
F	- Repairable item. When uneconomically repairable, condemn and dispose of the item at the direct support or AVIM level.
H	- Repairable item. When uneconomically repairable, condemn and dispose of the item at the general support level.
D	- Repairable item. When beyond lower level repair capability, return to depot. Condemnation and disposal of the item not authorized below depot level.

Recoverability Codes

Application/Explanation

- L - Reparable item. Condemnation and disposal not authorized below specialized repair activity (SRA)
- A - Item requires special handling or condemnation procedures because of specific reasons (e.g., precious metal content, high dollar value, critical material, or hazardous material) Refer to appropriate manuals/directives for specific instructions.

c. NSN (Column (3)). The national stock number for the item is listed in this column..

d. CAGFC (Column (4)). The Commercial and Government Entity Code (CAGEC) is a 5-digit numeric code which is used to identify the manufacturer, distributor, or Government agency/activity that supplies the item.

e. PART NUMBER (Column (5)). Indicates the primary number used by the manufacturer, (individual, company, firm, corporation, or Government activity), which controls the design and characteristics of the item by means of its engineering drawings, specifications, standards, and inspection requirements to identify an item or range of items.

NOTE

When you use an NSN to requisition an item, the item you receive may have a different part number from the number listed.

f. DESCRIPTION AND USABLE ON CODE (UOC) (Column (6)). This column includes the following information:

- (1) The Federal item name and, when required, a minimum description to identify the item.
- (2) Part numbers of bulk materials are referenced in this column in the line entry to be manufactured/fabricated.
- (3) The statement "END OF FIGURE" appears just below the last item description in Column (6) for a given figure in both Section II and Section III.

g. QTY (Column (7)). The QTY (quantity per figure) column indicates the quantity of the item used in the breakout shown on the illustration/figure, which is prepared for a functional group, subfunctional group, or an assembly. A "V" appearing in this column instead of a quantity indicates that the quantity is variable and may vary from application to application.

C-4. EXPLANATION OF INDEX FORMAT AND COLUMNS (SECTION IV)

a. NATIONAL STOCK NUMBER (NSN) INDEX

(1) STOCK NUMBER Column. This column lists the NSN in national item identification number (NIIN) sequence. The NIIN consists of the last nine digits of the NSN.

NSN
 (e.g. 5305-01-574-1467)
 NIIN

When using this column to locate an item, ignore the first four digits of the NSN. Use the complete NSN (13 digits) when requisitioning items by stock number.

(2) FIG. Column. This column lists the number of the figure where the item is identified/located. The figures are in numerical order in Section II and Section III.

(3) ITEM Column. The Item number identifies the item associated with the figure listed in the adjacent FIG. column. This item is also identified by the NSN listed on the same line.

b. PART NUMBER INDEX. Part numbers in this index are listed by part number in ascending alphanumeric sequence (i.e., vertical arrangement of letter and number combination which places the first letter or digit of each group in order A through Z, followed by the numbers 0 through 9, and each following letter or digit in like order).

(1) PART NUMBER Column. Indicates the primary number assigned to the item by the manufacturer (individual, firm, corporation, or Government activity), which controls the design and characteristics of the item by means of its engineering drawings, specifications, standards, and inspection requirements to identify an item or range of items.

(2) FIG Column. This column lists the number of the figure where the item is identified/located in Section It and Section III.

(3) ITEM Column. The item number is that number assigned to the item as it appears in the figure referenced in adjacent figure number column.

C-5. SPECIAL INFORMATION

a. USABLE ON CODE. The usable on code appears in the lower left corner of the Description Column heading. Usable on codes are shown as "UOC..." in the Description Column (justified left) on the last line of the applicable item description/nomenclature. Uncoded items are applicable to all models. Identification of the usable on codes used in this RPSTL are:

Code	Used On
ECY	M52983-03 (3K TANK)
EQB	FCE574-81-1-A (10K TANK)
EQC	10K ACCESSORIES
ELS	BA92-162 (20K TANK)
EDC	M52983-50 (50K TANK)
EDD	50K GALLON TANK (TWO DRAIN FITTINGS)
ENQ	PD 5430-0001 (5K BARREL TANK)
FCM	BA91-140 (20K TANK)
FCN	BA91-141 (10K TANK)
FMC	BA91-140A (20K TANK)
FMD	BA91-141A (10K TANK)
FNR	WTM3KF (3K TANK)

b. INDEX NUMBERS. Items which have the word BULK in the figure column will have an index number shown in the item number column. This index number is a cross-reference between the National Stock Number/Part Number Index and the bulk material list in Section II.

c. ASSOCIATED PUBLICATIONS. The publication listed below pertain to the Collapsible Fabric Tanks and their components.

<u>Publication</u>	<u>Short Title</u>
TM 5-5430-218-13	Operator, Unit and Direct Support Maintenance Manual 3K Tank
TM 5-5430-210-12	Operator and Unit Maintenance Manual. 10K Tanks
TM 5-5430-219-13	Operator, Unit and Direct Support Maintenance Manual. 20K Tank
TM 5-5430-219-13	Operator, Unit and Direct Support Maintenance Manual. 50K Tank
TM 5-5430-214-13	Operator, Unit and Direct Support Maintenance Manual 5000 BBL Tank

C-6. HOW TO LOCATE REPAIR PARTS.

a. When National Stock Numbers or Part Numbers are NOT Known.

(1) First. Using the table of contents, determine the assembly or subassembly group to which the item belongs. This is necessary since figures are prepared for assembly groups and subassembly groups, and listings are divided into the same groups.

(2) Second. Find the figure covering the functional group or subfunctional group to which the item belongs.

(3) Third. Identify the item on the figure and note the Figure and Item Number to find the NSN.

(4) Fourth. Look in the repair parts list for the figure and item numbers. The NSNs and part numbers are on the same line as the associated item numbers.

b. When National Stock Number or Part Number is Known.

(1) First. If you have the national stock number, look in the STOCK NUMBER column of the National Stock Number Index. The NSN is arranged in national item identification number (NIIN) sequence (see paragraph 4a). Note the figure and item number next to the NSN.

(2) Second. Turn to the figure and locate the item number. Verify the item is the one you are looking for.

C-7. ABBREVIATIONS. Abbreviations used in this manual are listed in MIL-STD-12.

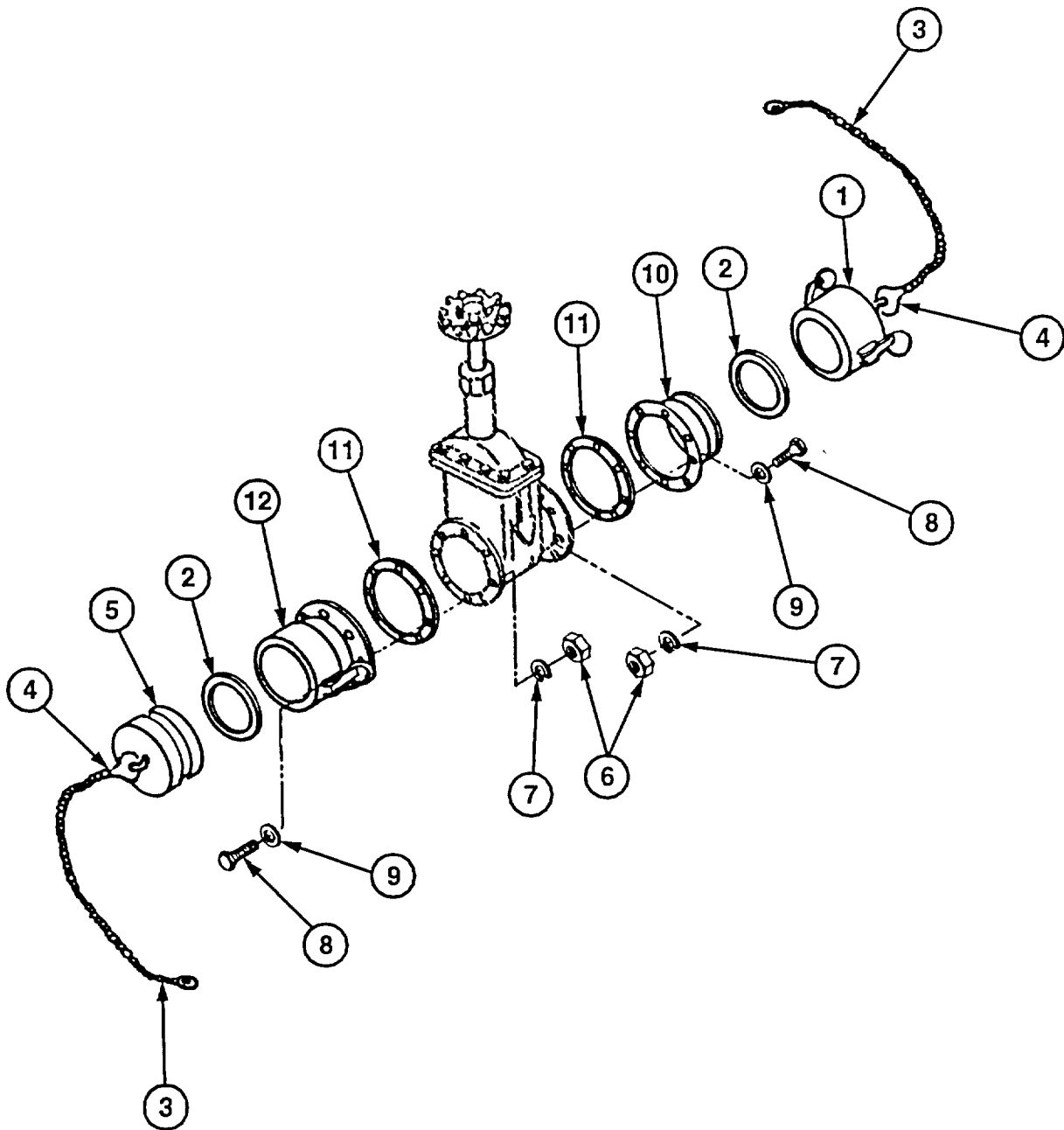


Figure 1. Filler and Discharge Valve Assembly

SECTION II

TM 5-5430-219-23P

(1) ITEM NO	(2) SMR CODE	(3) NSN	(4) CAGEC	(5) PART NUMBER	(6) DESCRIPTION AND USABLE ON CODES (UOC)	(7) QTY
					GROUP 01 VALVE ASSEMBLY, FILLER AND DISCHARGE	
					FIG. 1 FILLER AND DISCHARGE VALVE ASSEMBLY	
	PBOFF	4820012625079	00333	50609764	GATE VALVE ASSEMBLY FILLER AND DISCHARGE UOC: EDC, EDD, ELS, ENQ	1
1	PBOZZ	4730006406156	96906	MS27028-17	.CAP, QUICK DISCONN 4 IN UOC: EDC, EDD, ELS, ENQ	1
1	PBOZZ	4730009290787	96906	MS27028-15	.CAP, QUICK DISCONN 3 K TANK UOC: EDC, EDD, ELS, ENQ	1
2	PBOZZ	5330008994509	96906	MS27030-9	..GASKET HALF, 4 IN, VALVE ASSY UOC: EDC, EDD, ELS, ENQ	2
2	PBOZZ	5330000889166	96906	MS27030-8	..GASKET UOC: EDC, EDD, ELS, ENQ	1
3	PAOZZ	4010003600596	81718	H6683M	..CHAIN ASSEMBLY, SING 12 IN, DUST CAP UOC: EDC, EDD, ELS, ENQ	2
4	XDOZZ		01976	1SK	..RING, KEY DUST CAP UOC: EDC, EDD, ELS, ENQ	4
5	PBOZZ	4730009290790	96906	MS27029-15	.PLUG, QUICK DISCONN 3, K TANK UOC: EDC, EDD, ELS, ENQ	1
5	PBOZZ	4730006406188	96906	MS27029-17	.PLUG, QUICK DISCONN VALVE ASSY UOC: EDC, EDD, ELS, ENQ	1
6	PBOZZ	5310007320558	96906	MS51967-8	.NUT, PLAIN, HEXAGON 3/8-16, VALVE ASSY UOC: EDC, EDD, ELS, ENQ	16
7	PBOZZ	5310006379541	96906	MS35338-46	.WASHER, LOCK SPLIT, 3/8 IN, ID, VALVE ASSY UOC: EDC, EDD, ELS, ENQ	16
8	PBOZZ	5305007252317	96906	MS90728-64	.SCREW, CAP, HEXAGON H 3/8-16X1 1/2 IN, VALVE ASSY UOC: EDC, EDD, ELS, ENQ	16
9	PBOZZ	5310000877493	96906	MS27183-13	.WASHER, FLAT 3/8 IN, VALVE ASSY UOC: EDC, EDD, ELS, ENQ	16
10	PBOZZ	4730008405347	96906	MS27023-17	.COUPLING HALF, QUICK ADAPTER, FLANGED, MALE UOC: EDC, EDD, ELS, ENQ	1
10	PBOZZ	4730008892380	96906	MS27023-15	.COUPLING HALF, QUICK 3 K TANK ILC DOVER UOC: EDC, EDD, ELS, ENQ	1
11	PBOZZ	5330012625120	00333	50609735	.GASKET VALVE ASSY UOC: EDC, EDD, ELS, ENQ	2
11	PBOZZ	5330012809388	74897	66108-L	.GASKET UOC: EDC, EDD, ELS, ENQ	1
12	PBOZZ	4730008405348	96906	MS27027-17	.COUPLING HALF, QUICK QUICK DISCONNECT, FEMALE UOC: EDC, EDD, ELS, ENQ	1
12	PBOZZ	4730008892378	96906	MS27027-15	.COUPLING HALF, QUICK 3 K TANK UOC: EDC, EDD, ELS, ENQ	1

END OF FIGURE

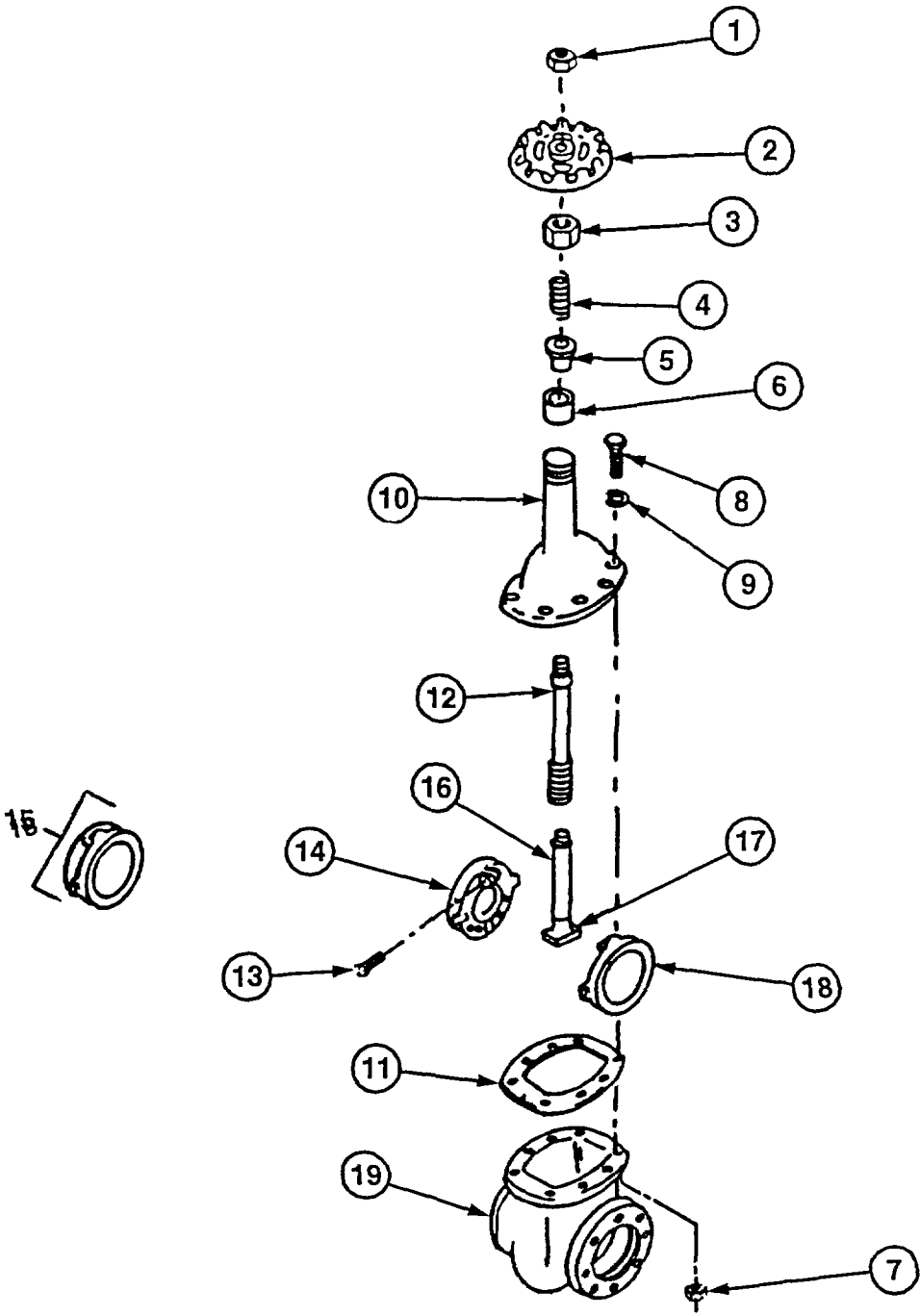


Figure 2. Gate Valve

SECTION II

TM 5-5430-219-23P

(1) ITEM NO	(2) SMR CODE	(3) NSN	(4) CAGEC	(5) PART NUMBER	(6) DESCRIPTION AND USABLE ON CODES (UOC)	(7) QTY
					GROUP 01 VALVE ASSEMBLY, FILLER AND DISCHARGE	
					FIG. 2 GATE VALVE	
	XDOOO		76364	C-35551	..VALVE, GATE UOC:ECY	1
	XDOOO		41592	235-RF	..VALVE, GATE VALVE ASSY UOC:EDC, EDD, ELS, ENQ, FNR	1
1	PBOZZ	5310012621359	41592	235RF-02052N	..NUT, PLAIN, HEXAGON GATE VALVE, 4 IN..... UOC:EDC, EDD, ELS, ENQ, FNR	1
1	XDOZZ		76364	3116-M	..NUT, PLAIN, HEXAGON 3 IN GATE VALVE UOC:ECY	1
2	XDOZZ		41592	235RF-02043A	..HANDWHEEL GATE VALVE, 4 IN UOC:EDC, EDD, ELS, ENQ, FNR	1
2	XDOZZ		76364	7699-K	..HANDWHEEL 3 IN GATE VALVE UOC:ECY	1
3	PAOZZ	5310012621337	41592	235RF-020721	..NUT, PACKING GATE VALVE, 4 IN UOC:EDC, EDD, ELS, ENQ, FNR	1
3	XDOZZ		76364	2864-L	..STUFF NUT 3 IN GATE VALVE UOC:ECY	1
4	PAOZZ	5360012621338	41592	235RF-02162S	..SPRING, GLAND GATE VALVE, 4 IN..... UOC:EDC, EDD, ELS, ENQ, FNR	1
4	XDOZZ		76364	70171-L	..GLAND, SPRING 3 IN GATE VALVE..... UOC:ECY	1
5	PAOZZ	5330012621363	41592	235RF-020621	..RETAINER, PACKING GATE VALVE, 4 IN..... UOC:EDC, EDD, ELS, ENQ, FNR	1
5	XDOZZ		76364	363-G	..GLAND FOLLOWER 3 IN GATE VALVE UOC:ECY	1
6	PAOZZ	5365012621339	41592	235RF-02082P	..RING, PACKING GATE VALVE, 4 IN..... UOC:EDC, EDD, ELS, ENQ, FNR	1
6	XDOZZ		76364	6593-L	..PACKING, PREFORMED 3 IN. VALVE..... UOC:ECY	1
7	PAOZZ	5310012621360	41592	235RF-02202N	..NUT, PLAIN, HEXAGON GATE VALVE, 4 IN..... UOC:EDC, EDD, ELS, ENQ, FNR	8
8	PAOZZ	5305012621365	41592	235RF-02192S	..SCREW, CAP, HEXAGON H GATE VALVE, 4 IN.... UOC:EDC, EDD, ELS, ENQ, FNR	8
8	PAOZZ	5305012717588	76364	4247-E	..SCREW, BONNET 3 K TANK ILC DOVER..... UOC:ECY	8
9	PAOZZ	5310012655044	41592	235RF-02212W	..WASHER, LOCK GATE VALVE, 4 IN UOC:EDC, EDD, ELS, ENQ, FNR	8
9	XDOZZ		76364	38084-B	..BONNET, LOCK WASHER 3 IN GATE VALVE UOC:ECY	8
10	XDOZZ		41592	235RF-0202MB	..BONNET, VALVE UOC:EDC, EDD, ELS, ENQ, FNR	1
10	XDOZZ		76364	23194-L	..BONNET 3 IN GATE VALVE UOC:ECY	1

SECTION II

TM 5-5430-219-23P

(1) ITEM NO	(2) SMR CODE	(3) NSN	(4) CAGEC	(5) PART NUMBER	(6) DESCRIPTION AND USABLE ON CODES (UOC)	(7) QTY
11	PAOZZ	5330012621340	41592	235RF-02092G	..GASKET, VALVE BONNET..... UOC:EDC, EDD, ELS, ENQ, FNR	1
11	XDOZZ		76364	66173-L	..GASKET 3 IN 3 IN GATE VALVE..... UOC:ECY	1
12	PBOZZ	4820012621341	41592	235RF-0203MS	..STEM, VALVE..... UOC:EDC, EDD, ELS, ENQ, FNR	1
12	XDOZZ		76364	26264-L	..STEM VALVE GATE 3 IN..... UOC:ECY	1
13	PBOZZ	5305012621343	41592	235RF-02182S	..SCREW, DISK GATE VALVE, 4 IN..... UOC:EDC, EDD, ELS, FNR	2
14	PBOZZ	4820012621366	41592	235RF-0210MD	..DISK, VALVE GATE VALVE, 4 IN..... UOC:EDC, EDD, ELS, ENQ, FNR	1
15	PAOZZ	4820012625121	41592	235RF-0212MD	..VALVE, GATE GATE VALVE, 4 IN..... UOC:EDC, EDD, ELS, ENQ, FNR	1
16	PBOZZ	4820012621344	41592	235RF-0217MR	..DISK, VALVE GATE VALVE, 4 IN..... UOC:EDC, EDD, ELS, ENQ, FNR	1
17	XDOZZ		76364	3042-L	..PULL, NUT 3 IN GATE VALVE..... UOC:ECY	1
18	XDOZZ		41592	235RF-0215MR	..BODY, VALVE 4 IN..... UOC:EDC, EDD, ELS, ENQ, FNR	1
19	XDOZZ		41592	235RF-0201MB	..BODY, VALVE 4 IN..... UOC:EDC, EDD, ELS, ENQ, FNR	1
19	XDOZZ		76364	2093-7	..BODY, VALVE 3IN..... UOC:ECY	1

END OF FIGURE

1
2 thru 13

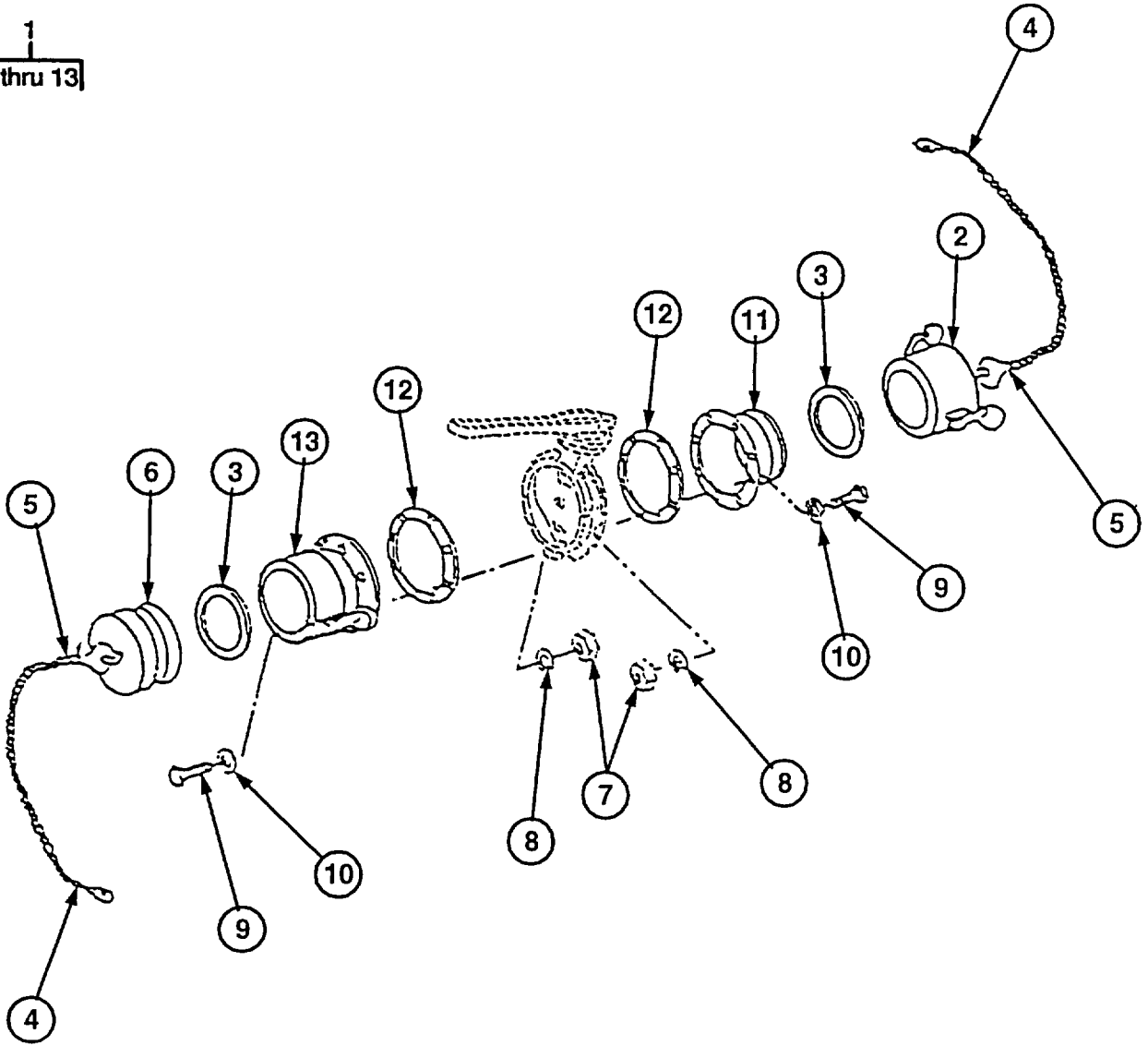


Figure 3. Discharge Valve Assembly (Butterfly Valve)

SECTION II

TM 5-5430-219-23P

(1) ITEM NO	(2) SMR CODE	(3) NSN	(4) CAGEC	(5) PART NUMBER	(6) DESCRIPTION AND USABLE ON CODES (UOC)	(7) QTY
					GROUP 01 VALVE ASSEMBLY, FILLER AND DISCHARGE FIG. 3 DISCHARGE VALVE ASSEMBLY (BUTTERFLY VALVE)	
1	AOOOO		66618	C0317-4NA	BUTTERFLY VALVE ASS FILLER AND DISCHARGE UOC:FCM, FCN	1
2	PBOZZ	4730006406156	96906	MS27028-17	.CAP, QUICK DISCONNEC 4 IN..... UOC:FCM, FCN	1
3	PCOZZ	5330008994509	96906	MS27030-9	..GASKET..... UOC:FCM, FCN	2
4	PAOZZ	4010003600596	9H113	H06683M	..CHAIN ASSEMBLY, SING 2 IN, DUST CAP..... UOC:FCM, FCN	2
5	XDOZZ		01976	1SK	..RING, KEY..... UOC:FCM, FCN	4
6	PBOZZ	4730006406188	96906	MS27029-17	.PLUG, QUICK DISCONNEN UOC:FCM, FCN	1
7	PBOZZ	5310007320558	96906	MS51967-8	.NUT, PLAIN, HEXAGON 3/8-16..... UOC:FCM, FCN	16
8	PAOZZ	5310006379541	96906	MS35338-46	.WASHER, FLAT SPLIT, 3/8 IN, ID..... UOC:FCM, FCN	16
9	PBOZZ	5305013258387	96906	MS90725-64	.SCREW, CAP, HEXAGON H 3/8-16X1 1/2..... UOC: FCM, FCN	16
10	PBOZZ	5310000877493	96906	MS27183-13	.WASHER, FLAT 3/8 IN..... UOC:FCM, FCN	16
11	PBOZZ	4730008405347	96906	MS27023-17	.COUPLING HALF, QUICK ADAPTER,..... FLANGED, MALE UOC:FCM, FCN	1
12	PBOZZ	5330012625120	00333	50609735	.GASKET..... UOC:FCM, FCN	2
13	PBOZZ	4730008405348	96906	MS27027-17	.COUPLING HALF, QUICK FEMALE..... UOC: FCM, FCN	1

END OF FIGURE

1
2 thru 19

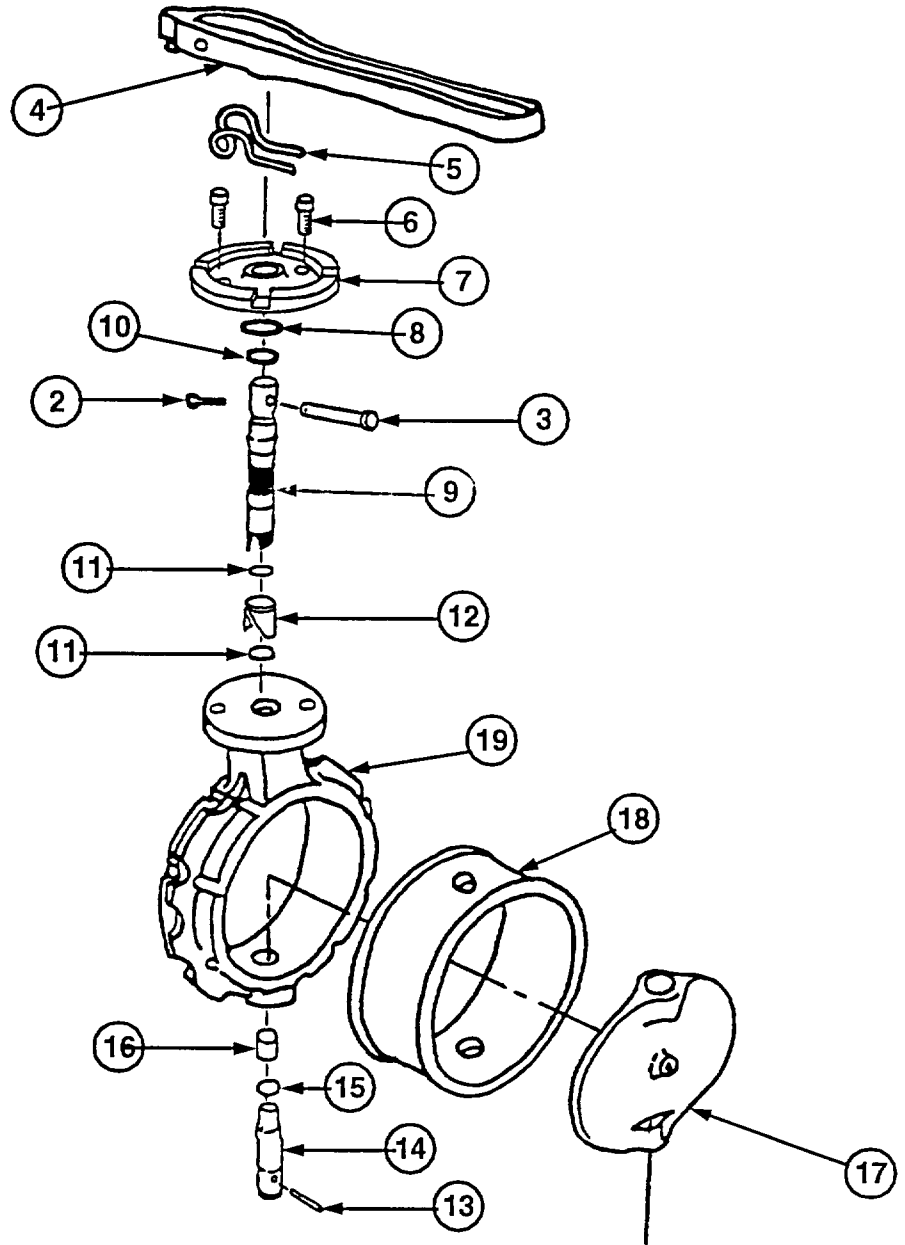


Figure 4. Butterfly Valve

SECTION II

TM 5-5430-219-23P

(1) ITEM NO	(2) SMR CODE	(3) NSN	(4) CAGEC	(5) PART NUMBER	(6) DESCRIPTION AND USABLE ON CODES (UOC)	(7) QTY
					GROUP 01 VALVE ASSEMBLY, FILLER AND DISCHARGE	
					FIG. 4 BUTTERFLY VALVE	
1	XBOOO		76364	P-2860H	VALVE, BUTTERFLY 4 INCH.....	1
					UOC:FCM, FCN	
2	KFOZZ		76364	7959-D	.COTTER PIN PART OF KIT P/N 8621-N.....	1
					UOC:FCM, FCN	
3	KFOZZ	5315010738970	76364	5988-N	.PIN PART OF KIT P/N 8621-N.....	1
					UOC:FCM, FCN	
4	XBOZZ		76364	P-8449	.HANDLE, MANUAL CONTR BUTTERFLY VALVE ...	1
					UOC:FCM, FCN	
5	PAOZZ	5342010773664	76364	70170-N	.CLIP.....	1
					UOC:FCM, FCN	
6	XBOZZ		76364	42136-N	.SCREW, CAP, SOCKET HE	2
					UOC:FCM, FCN	
7	XBOZZ		76364	45199-N	.PLATE, VALVE STOP.....	1
					UOC:FCM, FCN	
8	PAOZZ	5330013812809	76364	6595-N	.SEAL, PLAIN ENCASED	1
					UOC:FCM, FCN	
9	KFOZZ		76364	26462-N	.TOP STEM PART OF KIT P/N 8621-N.....	1
					UOC:FCM, FCN	
10	KFOZZ	5330010735007	76364	66150-N	.SEAL, VALVE PART OF KIT P/N 8621-N.....	1
					UOC:FCM, FCN	
11	KFOZZ	5331010769342	76364	6596-B	.O-RING	2
					UOC:FCM, FCN	
12	KFOZZ		76364	7410-N	.TOP BEARING SPLIT	1
					UOC:FCM, FCN	
13	KFOZZ		76364	5996-R	.SPRING PIN-BOTTOM PART OF KIT P/N 869-N.....	1
					UOC:FCM, FCN	
14	KFOZZ		76364	26399-N	.BOTTOM STEM PART OF KIT P/N 869-N	1
					UOC:FCM, FCN	
15	KFOZZ	5331010769342	76364	6596-B	.O-RING PART OF KIT P/N 869-N	1
					UOC: FCM, FCN	
16	KFOZZ		76364	7411-N	.BOTTOM BEARING PART OF KIT P/N 869-N.....	1
					UOC:FCM, FCN	
17	XBOZZ		76364	38194-N	.DISC.....	1
					UOC:FCM, FCN	
18	XDOZZ		76364	X-7993-N	.SLEEVE	1
					UOC: FCM, FCN	
19	XBOZZ		76364	1726-N	.BODY	1
					UOC:FCM, FCN	
	PBOZZ	4820010900877	76364	8621-N	PARTS KIT, BUTTERFLY	1
					UOC:FCM, FCN	
					COTTER PIN (1) 4-2	
					PIN (1) 4-3	
					SEAL, VALVE (1) 4-10	
					TOP STEM (1) 4-9	

END OF FIGURE

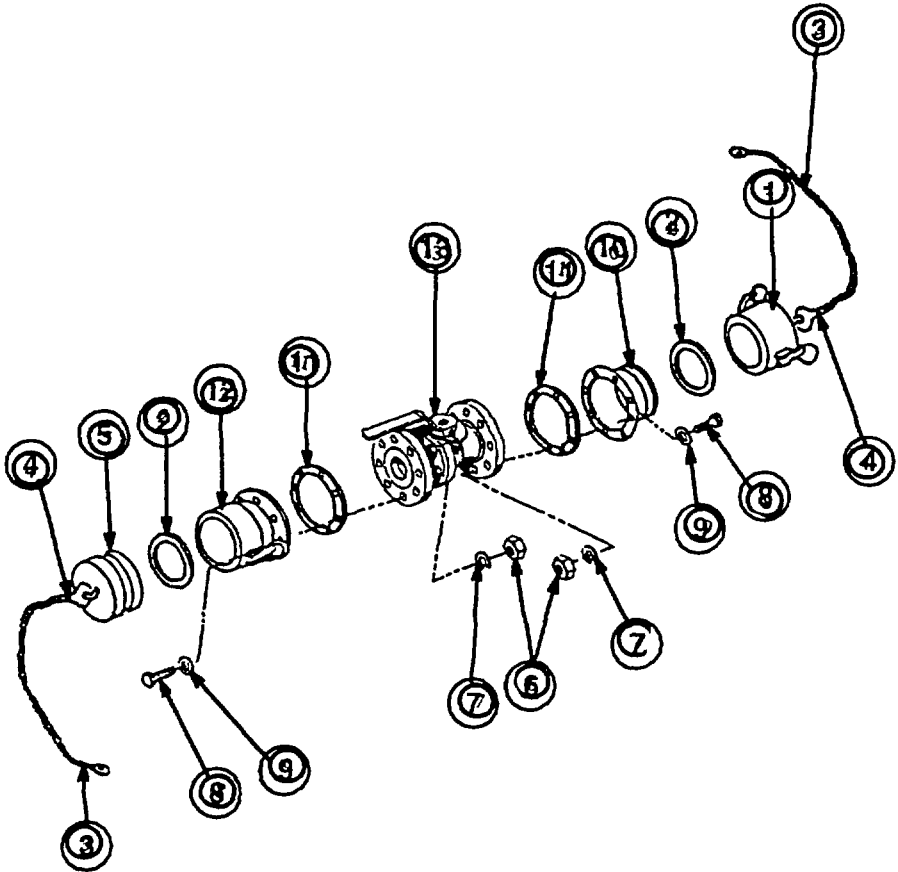


Figure 5. Discharge Valve Assembly (Ball Valve)

SECTION II

TM 5-5430-219-23P

(1) ITEM NO	(2) SMR CODE	(3) NSN	(4) CAGEC	(5) PART NUMBER	(6) DESCRIPTION AND USABLE ON CODES (UOC)	(7) QTY
					GROUP 01 VALVE ASSEMBLY, FILLER AND DISCHARGE FIG. 5 DISCHARGE VALVE ASSEMBLY (BALL VALVE)	
	AOOOO		81349	MIL-T-52983F-BVA	VALVE ASSEMBLY, BALL 4 INCH, FILLER.....	1
					AND DISCHARGE UOC:FMC, FMD	
1	PAOZZ	4730006406156	96906	MS27028-17	.CAP, QUICK DISCONNEC.....	1
					UOC:FMC, FMD	
2	PCOZZ	5330008994509	96906	MS27030-9	..GASKET.....	2
					UOC:FMC, FMD	
3	PAOZZ	4010003600596	9H113	H06683M	..CHAIN ASSEMBLY, SING 2 IN, DUST CAP.....	2
					UOC:FMC, FMD	
4	XDOZZ		01976	1SK	..RING, KEY.....	4
					UOC:FMC, FMD	
5	PAOZZ	4730006406188	96906	MS27029-17	.PLUG, QUICK DISCONN 4 INCH.....	1
					UOC:FMC, FMD	
6	PAOZZ	5310007320558	96906	MS51967-8	.NUT, PLAIN, HEXAGON 3/8-16.....	16
					UOC:FMC, FMD	
7	PAOZZ	5310006379541	96906	MS35338-46	.WASHER, FLAT SPLIT, 3/8 IN, ID.....	16
					UOC:FMC, FMD	
8	PAOZZ	5305013258387	96906	MS90725-64	.SCREW, CAP, HEXAGON H 3/8-16X1 1/2.....	16
					UOC:FMC, FMD	
9	PAOZZ	5310000877493	96906	MS27183-13	.WASHER, FLAT 3/8 IN.....	16
					UOC:FMC, FMD	
10	XDOZZ		96906	MS27023-17	.COUPLING HALF, QUICK ADAPTER,.....	1
					FLANGED, MALE UOC:FMC, FMD	
11	PCOZZ	5330012625120	00333	50609735	.GASKET.....	2
					UOC:FMC, FMD	
12	PAOZZ	4730008405348	96906	MS27027-17	.COUPLING HALF, QUICK FEMALE.....	1
					UOC:FMC, FMD	
13	XDOZZ		0A6K1	4IN-CS15-F	.VALVE, BALL, 4 IN.....	1
					UOC:FMC, FMD	

END OF FIGURE

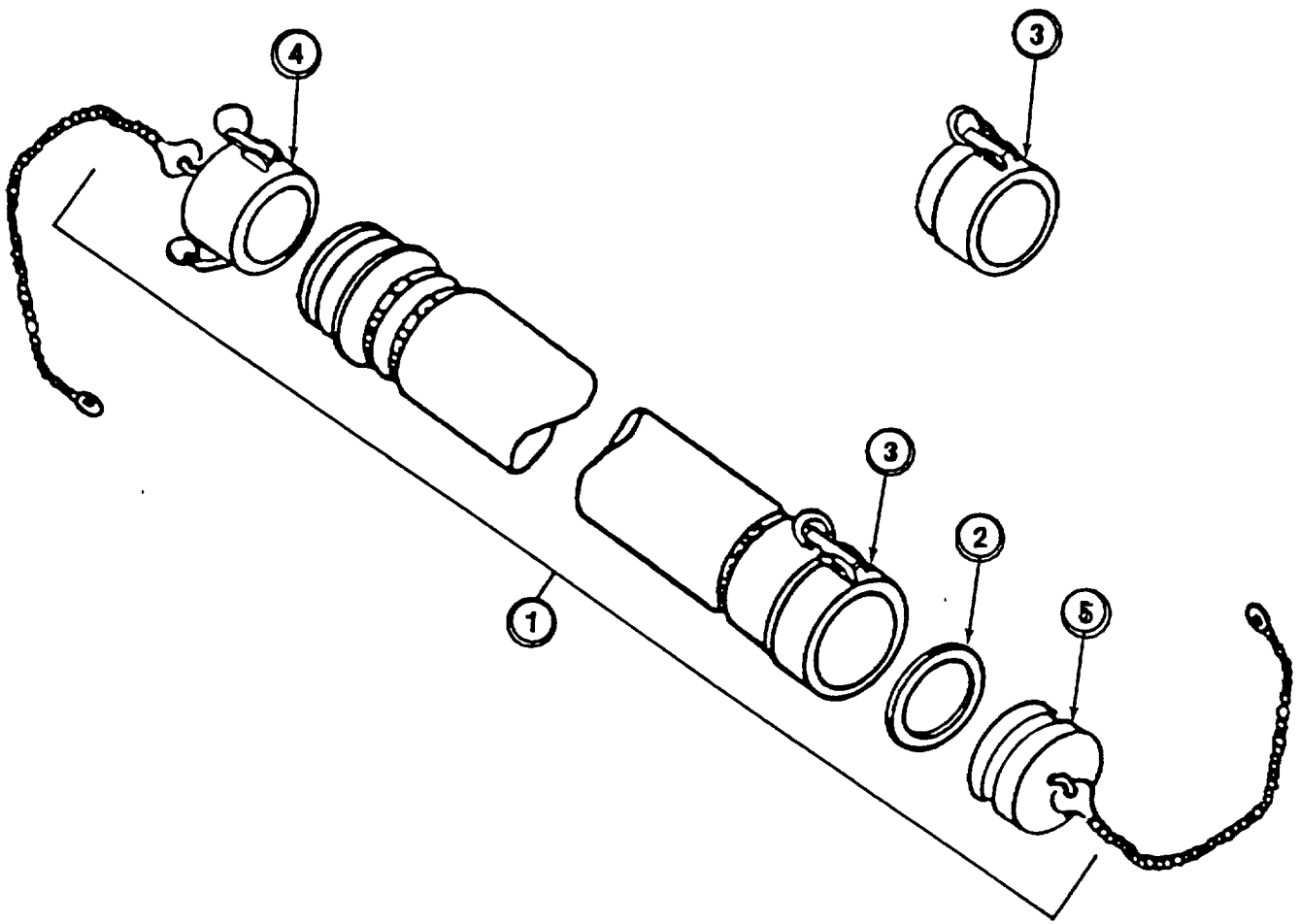


Figure 6. Filler and Discharge Hose Assembly

SECTION II

TM 5-5430-219-23P

(1) ITEM NO	(2) SMR CODE	(3) NSN	(4) CAGEC	(5) PART NUMBER	(6) DESCRIPTION AND USABLE ON CODES (UOC)	(7) QTY
					GROUP 02 FIG. 6	
					HOSE ASSEMBLY, FILLER AND DISCHARGE FILLER AND DISCHARGE HOSE ASSEMBLY	
1	PBOZZ	4720012625146	00333	50609892	HOSE ASSEMBLY, NONME 4 IN X 10 FT, WITH QUICK DISCONNECT FITTINGS UOC:EDC, EDD, ELS, ENQ	1
1	XDOZZ		74897	239-20023-01	HOSE, ASSY UOC:ECY	1
1	XAOZZ		0A6K1	D102408	HOSE, ASSY, 3IN..... UOC:FNR	1
2	PBOZZ	5330008994509	96906	MS27030-9	.GASKET HALF, 4 IN UOC:EDC, EDD, ELS, ENQ, FNR	1
2	PBOZZ	5330000889166	96906	MS27030-8	.GASKET 3 INCH..... UOC:ECY	1
3	PBOZZ	4730009513293	96906	MS49000-1	.REDUCER, QUICK DISCO 3 K TANK UOC:ECY, FNR	1
4	PBOZZ	4730006406188	96906	MS27029-17	.PLUG, QUICK DISCONNE 4 INCH..... UOC:EDC, EDD, ENQ, FNR	1
4	PBOZZ	4730009290790	96906	MS27029-15	.PLUG, QUICK DISCONNE UOC:ECY	1
5	PBOZZ	4730006406156	96906	MS27028-17	.CAP, QUICK DISCONNEC 4 INCH UOC:EDC, EDD, ENQ, FNR	1
5	PBOZZ	4730009290787	96906	MS27028-15	.CAP, QUICK DISCONNEC DUST CAP..... UOC:ECY	1

END OF FIGURE

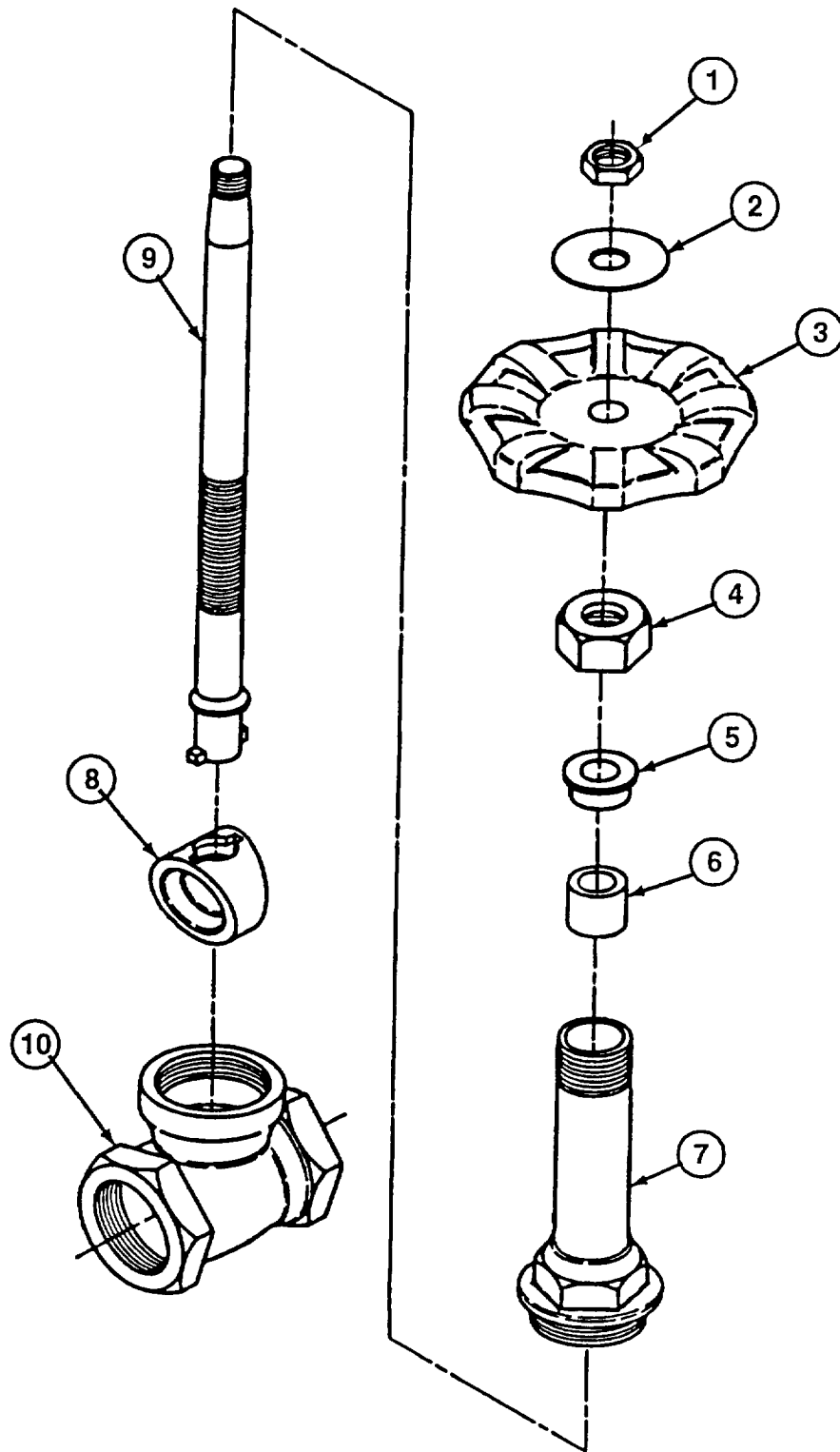


Figure 7. Drain Gate Valve

SECTION II

TM 5-5430-219-23P

(1) ITEM NO	(2) SMR CODE	(3) NSN	(4) CAGEC	(5) PART NUMBER	(6) DESCRIPTION AND USABLE ON CODES (UOC)	(7) QTY
					GROUP 03 VALVE, GATE, DRAIN FIG. 7 DRAIN GATE VALVE	
	PBOOO	4920005951841	67060	009240-3	VALVE, GATE SP-80, TYPE 11, 125 LB.....	1
1	PAOZZ	5310012621345	76364	1148-10	UOC:ECY .NUT, HANDWHEEL GATE VALVE, 1/2 IN	1
2	XDOZZ		76364	1148-9	UOC:ECY .PLATE, IDENT GATE VALVE, 1/2 IN.....	1
3	XDOZZ		76364	1148-8	UOC:ECY .WHEEL, HAND GATE VALVE, 1/2 IN.....	1
4	PAOZZ	5310012621346	76364	1148-7	UOC:ECY .NUT, PACKING GATE VALVE, 1/2 IN	1
5	PAOZZ	5330012621364	76364	1148-6	UOC:ECY .RETAINER, PACKING GATE VALVE, 1/2 IN.....	1
6	PAOZZ	5330012621362	76364	1148-5	UOC:ECY .PACKING MATERIAL GATE VALVE, 1/2 IN.....	1
7	XDOZZ		76364	1148-2	UOC:ECY .BONNET, VALVE GATE VALVE, 1/2 IN.....	1
8	PAOZZ	4820012621347	76364	1148-3	UOC:ECY .DISK, WEDGE GATE VALVE, 1/2 IN.....	1
9	PBOZZ	4820012621348	76364	1148-4	UOC:ECY .STEM, VALVE GATE VALVE, 1/2 IN	1
10	XDOZZ		76364	1148-1	UOC:ECY .BODY, VALVE GATE VALVE, 1/2 IN.....	1

END OF FIGURE

1
2 thru 18

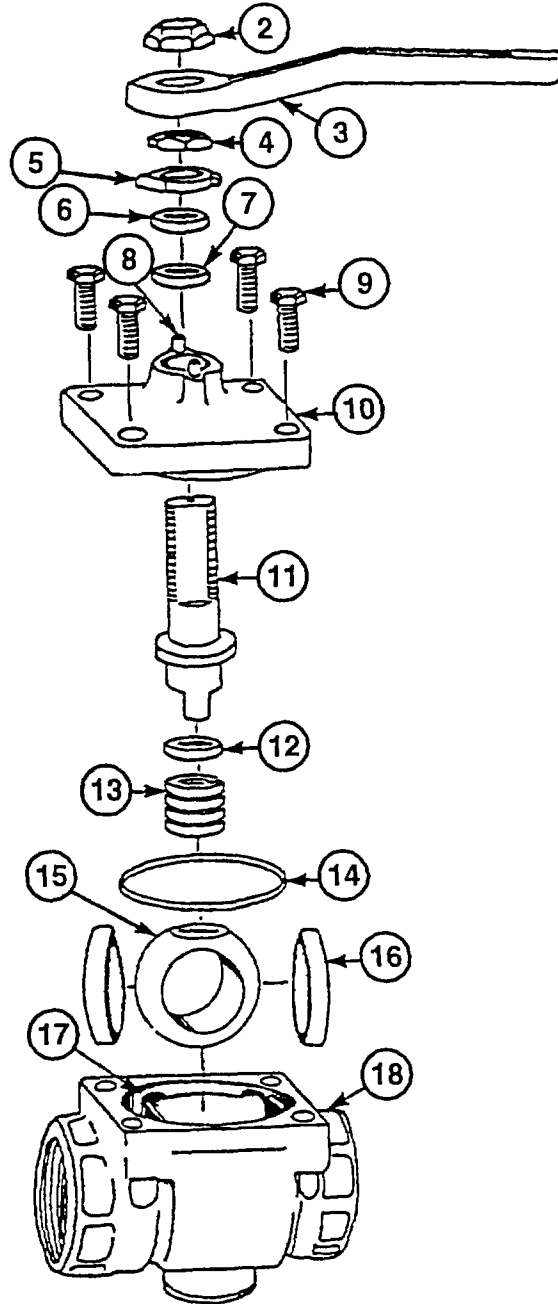


Figure 8. Drain Ball Valve

SECTION II

TM 5-5430-219-23P

(1) ITEM NO	(2) SMR CODE	(3) NSN	(4) CAGEC	(5) PART NUMBER	(6) DESCRIPTION AND USABLE ON CODES (UOC)	(7) QTY
					GROUP 03 VALVE, GATE, DRAIN FIG. 8 DRAIN BALL VALVE	
1	XDOOO		0A6K1	2222191	BALL VALVE 2 INCH.....	1
					UOC:FCM, FCN, FMC, FMD, FNR	
2	XBOZZ		0A6K1	29014	.HANDLE RETAINER NUT.....	1
					UOC:FCM, FCN, FMC, FMD, FNR	
3	XBOZZ		0AK61	29015	.HANDLE.....	1
					UOC:FCM, FCN, FMC, FMD, FNR	
4	XBOZZ		0A6K1	29016	.STEM NUT.....	1
					UOC:FCM, FCN, FMC, FMD, FNR	
5	XBOZZ		0A6K1	29012	.TRAVEL STOP, SINC.....	1
					UOC:FCM, FCN, FMC, FMD, FNR	
6	XBOZZ		0A6K1	29011	.GLAND RING.....	1
					UOC:FCM, FCN, FMC, FMD, FNR	
7	XBOZZ		0A6K1	29010A	.STEM SEAL.....	1
					UOC:FCM, FCN, FMC, FMD, FNR	
8	XBOZZ		0A6K1	29013	.PIN GROOVED.....	1
					UOC:FCM, FCN, FMC, FMD, FNR	
9	XBOZZ		0A6K1	29007	.CAPSCREW HEX HEAD .5IN-13 UNC X.....	4
					1.75 INCH	
					UOC:FCM, FCN, FMC, FMD, FNR	
10	XBOZZ		0A6K1	29002	.BONNET.....	1
					UOC:FCM, FCN, FMC, FMD, FNR	
11	XBOZZ		0A6K1	29009	.STEM.....	1
					UOC:FCM, FCN, FMC, FMD, FNR	
12	XBOZZ		0A6K1	29010B	.STEM SEAL.....	1
					UOC:FCM, FCN, FMC, FMD, FNR	
13	XBOZZ		0A6K1	29006	.SPRING.....	1
					UOC:FCM, FCN, FMC, FMD, FNR	
14	XBOZZ		0AK61	29008	.BONNET GASKET.....	1
					UOC:FCM, FCN, FMC, FMD, FNR	
15	XBOZZ		0A6K1	29003	.BALL.....	1
					UOC:FCM, FCN, FMC, FMD, FNR	
16	XBOZZ		0AK61	29004	.SEAT.....	2
					UOC:FCM, FCN, FMC, FMD, FNR	
17	XBOZZ		0A6K1	29005	.SEAT RING.....	2
					UOC:FCM, FCN, FMC, FMD, FNR	
18	XBOZZ		0A6K1	29001	.BODY.....	1
					UOC:FCM, FCN, FMC, FMD, FNR	

END OF FIGURE

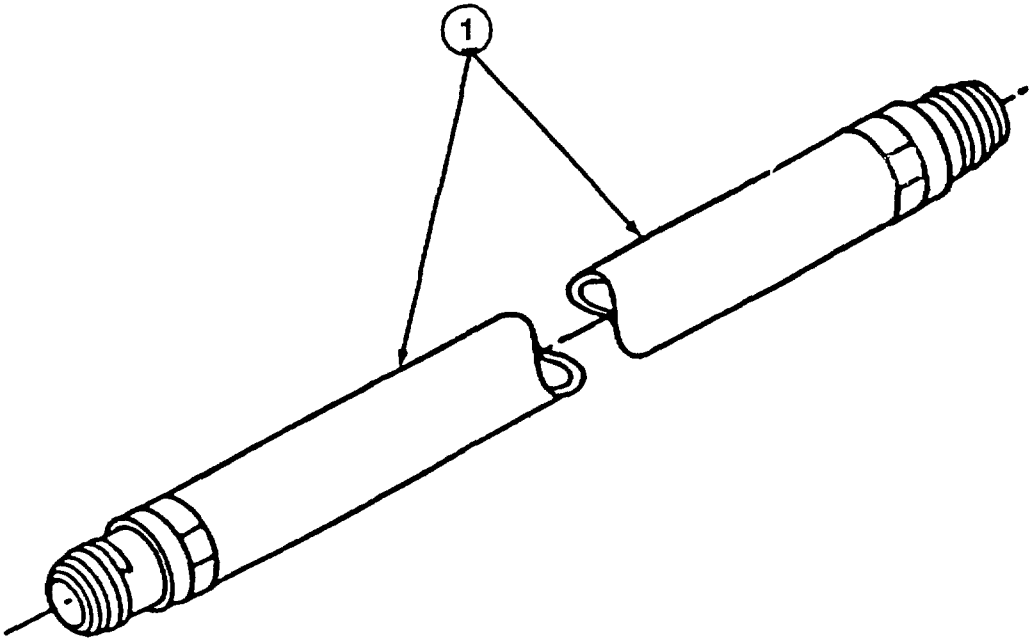


Figure 9. Drain Hose Assembly

SECTION II

TM 5-5430-219-23P

(1) ITEM NO	(2) SMR CODE	(3) PART NSN	(4) CAGEC	(5) NUMBER	(6) DESCRIPTION AND USABLE ON CODES (UOC)	(7) QTY
					GROUP 04 HOSE ASSEMBLY, DRAIN FIG. 9 DRAIN HOSE ASSEMBLY	
1	XDOZZ		00333	50608694	HOSE ASSY, DRAIN TYPE I, SIZE 2, CLASS 2, STYLE A X 8 FT UOC: ECY	1

END OF FIGURE

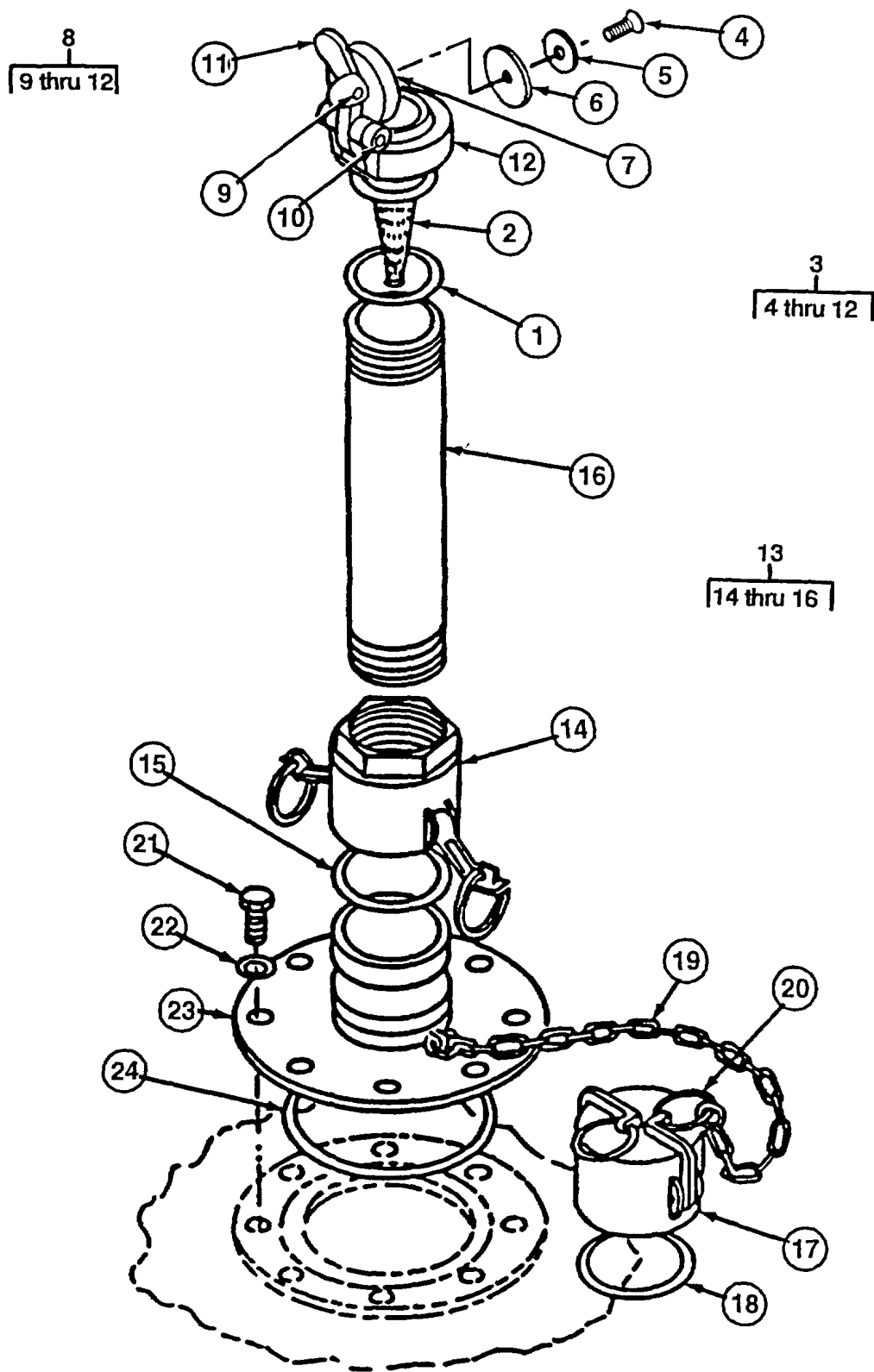


Figure 10. Vent and Pipe Assembly

SECTION II

TM 5-5430-219-23P

(1) ITEM NO	(2) SMR CODE	(3) NSN	(4) CAGEC	(5) PART NUMBER	(6) DESCRIPTION AND USABLE ON CODES (UOC)	(7) QTY
					GROUP 05 VENT AND PIPE ASSEMBLY FIG. 10 VENT AND PIPE ASSEMBLY	
	PBOOO XBOOO	4930007340180	49234 41592	EX1333B 780-0100AC	STRAINER ELEMENT, SE ARRESTOR, VENT..... STRAINER ELEMENT, SE ARRESTOR, VENT..... UOC: FNR	1 1
1	PAOZZ	5330012621361	49234	EX1333B-18-95	.GASKET CAP ASSY	1
1	XDOZZ		41592	780-0100AC-10	.GASKET CAP ASSY	1
2	XDOZZ		49234	EX1333B-36-13	.SCREEN, FLAME ARRESTOR	1
3	PAOOO	5430012621350	49234	EX1333B-38	.CAP ASSEMBLY, RELIEF	1
3	XAOOO		41592	780-0100AC-11	.CAP ASSEMBLY, RELIEF	1
4	PAOZZ	5305012625080	49234	4447101620	..SCREW, VENT RELIEF CAP	1
4	XAOZZ		41592	780-0100AC-7	..SCREW, VENT RELIEF CAP	1
5	PAOZZ	5310012621351	49234	EX1333B-17-133	..WASHER RELIEF CAP	1
5	XAOZZ		41592	780-0100AC-6	..WASHER RELIEF CAP	1
6	PBOZZ	5330012621349	49234	205-18-95	..GASKET, RELIEF CAP CAP ASSY	1
6	XBOZZ		41592	780-0100AC-5	..GASKET, RELIEF CAP CAP ASSY	1
7	XDOZZ		49234	EX1333B-40-68	..CAP, RELIEF	1
7	XDOZZ		41592	780-0100AC-4	..CAP, RELIEF	1
8	XDOOO		49234	EX1333B-39	..HEAD ASSEMBLY CAP ASSY	1
9	PAOZZ	5320012621352	49234	4201232400	..RIVET HEAD ASSY	1
9	XAOZZ		41592	780-0100AC-3	96906MS20450C10AD24 ..RIVET HEAD ASSY	1
10	PAOZZ	5320012621353	49234	4201035000	..RIVET 96906 MS20450C12AD50	1
10	XAOZZ		41592	780-0100AC-8	..RIVET	1
11	XDOZZ		49234	EX1333B-3-607	..LEVER HEAD ASSY	1
11	XDOZZ		41592	780-0100AC-9	..LEVER HEAD ASSY	1
12	XDOZZ		49234	EX1333B-1-607	..BODY, HEAD ASSEMBLY.	1
13	PAOOO	5430012629475	00333	50609780	VENT ASSEMBLY, PIPE ASSEMBLY	1
13	XAOOO		41592	780-0100AC-1	VENT ASSEMBLY, PIPE ASSEMBLY	1
14	XDOZZ		96906	MS27024-11	..COUPLING HALF, QUICK 2 IN	1
15	PAOZZ	5330006122414	96906	MS27030-6	.GASKET 2IN	1
16	XDOZZ		00333	50609928	.PIPE, 2 IN	1
16	XDOZZ		10068	064-2400	.PIPE, 2 IN	1
					UOC: FNR	

SECTION II

TM 5-5430-219-23P

(1) ITEM NO	(2) SMR CODE	(3) NSN	(4) CAGEC	(5) PART NUMBER	(6) DESCRIPTION AND USABLE ON CODES (UOC)	(7) QTY
17	PAOZZ	4730006499100	96906	MS27028-11	CAP, QUICK DISCONNec	1
18	PAOZZ	5330006122414	96906	MS27030-6	GASKET 2IN	
19	XDOZZ		81718	H6683M	CHAIN ASSEMBLY, SING 12 IN, CAP ASSY	1
19	XDOZZ		10068	11855	CHAIN ASSEMBLY, SING 12 IN, CAP ASSY.....	1
					UOC: FNR	
20	XDOZZ		01976	1SK	RING, KEY CAP ASSY	1
					UOC: Ecy, EDC, EDD, ENQ	
21	PBOZZ	5305000680509	96906	MS90728-10	SCREW, CAP, HEXAGON H 1/4-20 X 1 1/4.....	8
					IN	
22	PBOZZ	5310008094058	96906	MS27183-10	WASHER, FLAT 1/4 IN	8
23	XDOZZ	4730014161533	96906	MS27023-21	COUPLING HALF, QUICK 2 IN	1
24	PAOZZ	5331002913085	96906	MS29513-250	O-RING VENT	1

END OF FIGURE

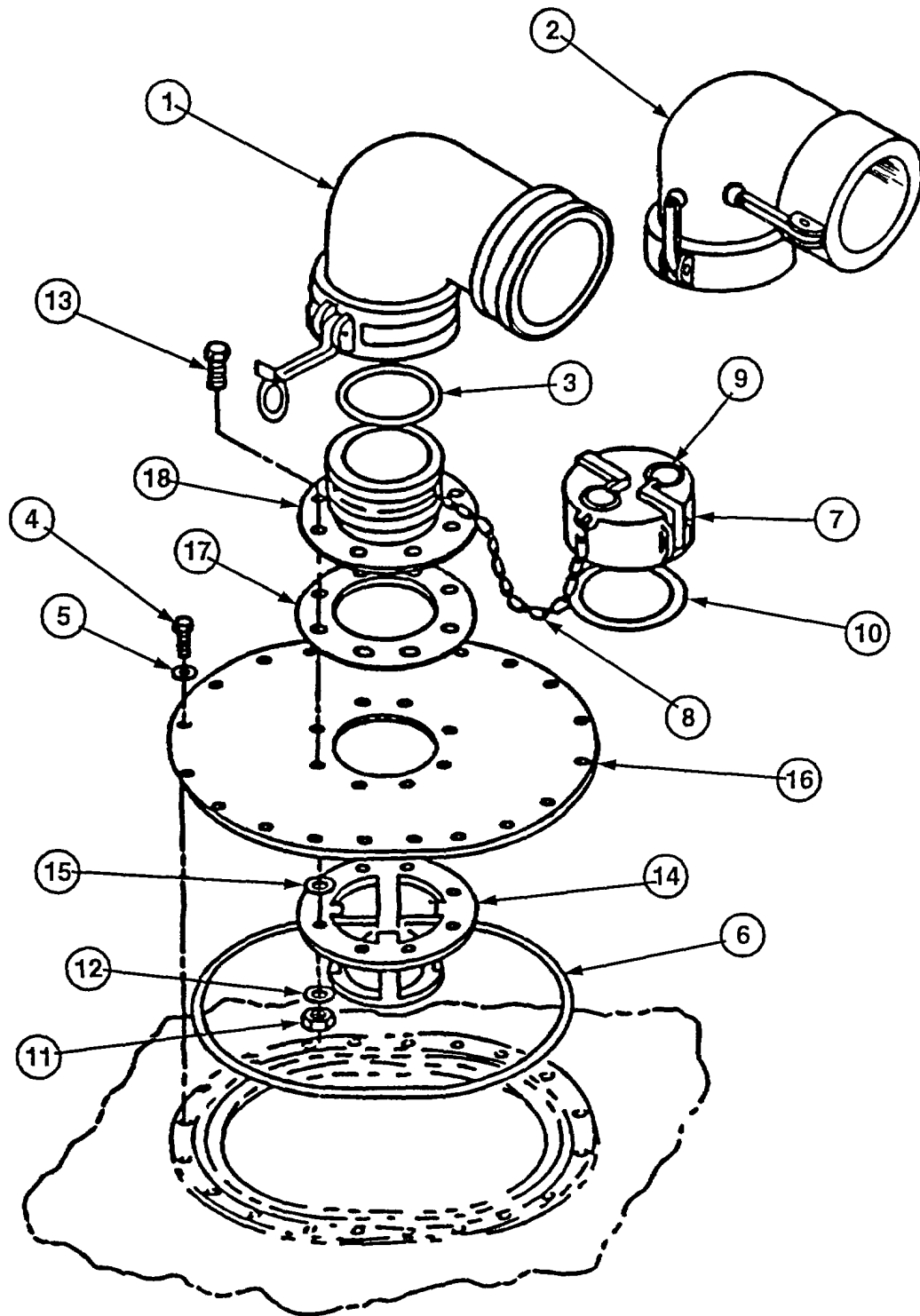


Figure 11. Filler/Discharge Assembly

SECTION II

TM 5-5430-219-23P

(1) ITEM NO	(2) SMR CODE	(3) NSN	(4) CAGEC	(5) PART NUMBER	(6) DESCRIPTION AND USABLE ON CODES (UOC)	(7) QTY
GROUP 06 ASSEMBLY, FILLER/DISCHARGE FIG. 11 FILLER/DISCHARGE ASSEMBLY						
1	XDOZZ		00333	50609362	ELBOW, FEMALE TO MALE, 4 IN, 90 DEG	1
1	XDOZZ		10068	064-2204	ELBOW, FEMALE TO MALE, 4 IN, 90 DEG	1
					UOC: FNR	
2	XDOZZ		00333	50609789	ELBOW, QD, FEMALE TO FEMALE, 4 IN, 90	1
2	XDOZZ		10068	064-2304	ELBOW, QD, FEMALE TO FEMALE, 4 IN, 90	1
					DEG	
					UOC: FNR	
3	PBOZZ	5330008994509	96906	MS27030-9	GASKET 4 IN	2
4	PAOZZ	5305002253843	80204	B1821BH025C100N	SCREW, CAP, HEXAGON H 1/4-20 X 1 IN	20
5	PAOZZ	5310008094058	96906	MS27183-10	WASHER, FLAT 1/4 IN	20
					UOC: EDC, EDD, ELS, ENQ, FNR	
6	PBOZZ	5330010673449	96906	MS29513-383	O-RING 4 IN.....	1
7	PAOZZ	4730006406156	96906	MS27028-17	CAP, QUICK DISCONNEC	1
8	PBOZZ	4010003600596	81718	H6683M	.CHAIN ASSEMBLY, SING 12 IN.....	1
8	XBOZZ		10068	11855	.CHAIN ASSEMBLY, SING 12 IN.....	1
					UOC: FNR	
9	PBOZZ		01976	1SK	.RING, KEY	2
10	PAOZZ	5330008994509	96906	MS27030-9	GASKET	2
11	PBOZZ	5310007320558	96906	MS51967-8	NUT, PLAIN, HEXAGON.	8
12	PBOZZ	5310006379541	96906	MS35338-46	WASHER, LOCK 3/8 IN.....	8
13	PBOZZ	5305007252317	96906	MS90728-64	SCREW, CAP, HEXAGON H 3/8-16 X 1 1/2.....	8
14	XDOZZ		00333	50609818	STUB, SUCTION	1
14	XDOZZ		10068	064-2466	STUB, SECTION	1
					UOC: FNR	
15	PBOZZ	5330008743744	83259	7500-3/8	GASKET 3/8 IN	1
					UOC: EDC, EDD, ELS, ENQ	
16	XDOZZ		00333	50862063	PLATE, CLOSURE	1
16	XDOZZ		0X0J8	519218P	PLATE, CLOSURE	1
					UOC: FNR	
17	PAOZZ	5330012625120	00333	50609735	GASKET	1
17	XAOZZ		0A6K1	FB7661-A	GASKET	1
					UOC: FNR	
18	XDOZZ	4730008405347	96906	MS27023-17	COUPLING HALF, QUICK	1

END OF FIGURE

8
1 thru 7

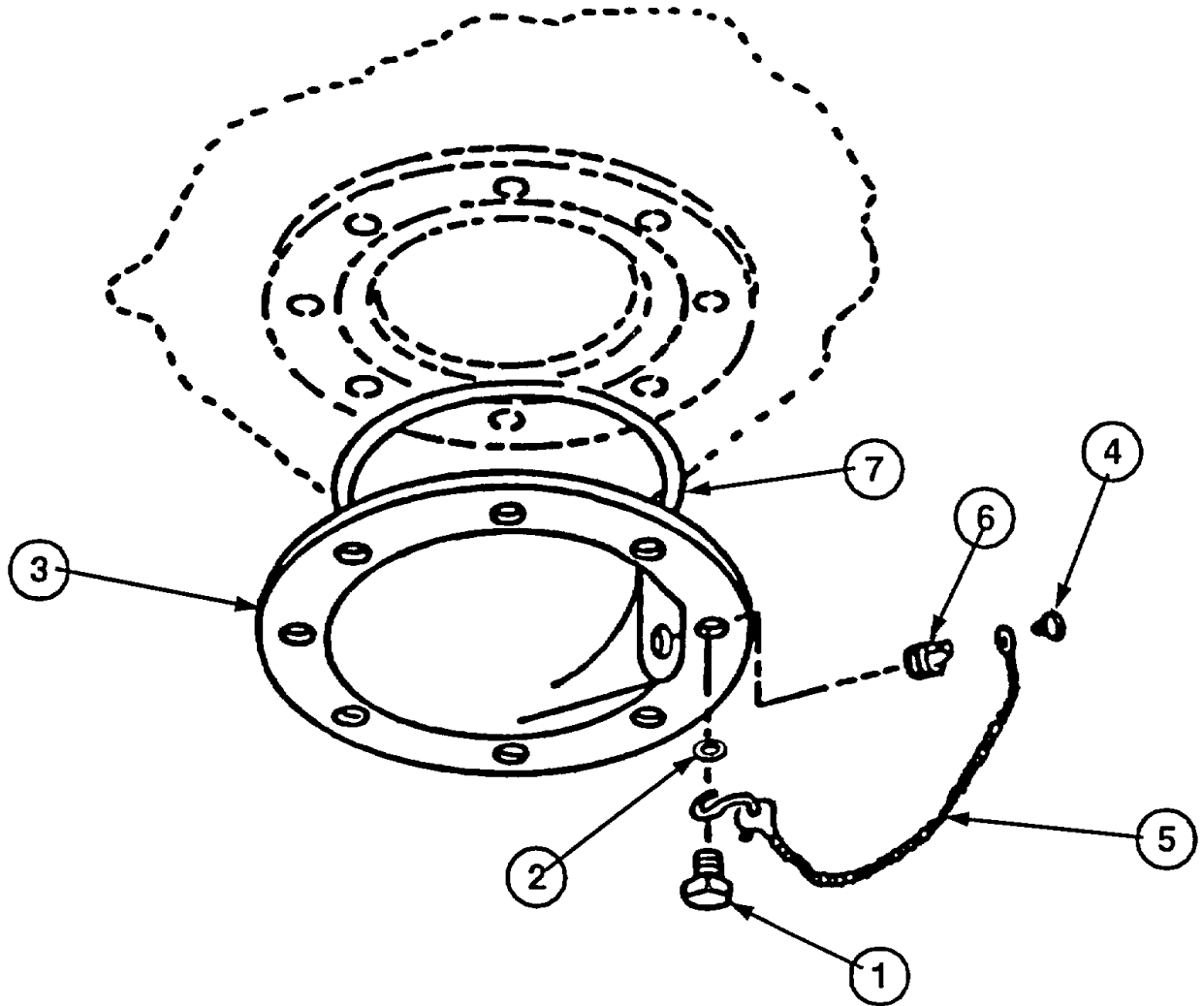


Figure 12. Drain Fitting Assembly

SECTION II

TM 5-5430-219-23P

(1) ITEM NO	(2) SMR CODE	(3) NSN	(4) CAGEC	(5) PART NUMBER	(6) DESCRIPTION AND USABLE ON CODES (UOC)	(7) QTY
GROUP 07 FITTING ASSEMBLY, DRAIN FIG. 12 DRAIN FITTING ASSEMBLY						
1	PBOZZ	5305002253843	80204	B1821BH025C100N	.SCREW, CAP, HEXAGON H 1/4-20 X 1 IN.	8
2	PBOZZ	5310008094058	96906	MS27183-10	.WASHER, FLAT 1/4 IN	8
3	XDOZZ		00333	50609926	.PLATE, COVER, DRAIN FITTING ASSY	1
3	XDOZZ		0X0J8	51922D	.PLATE, COVER, DRAIN FITTING ASSY	1
UOC: FNR						
4	XDOZZ		00333	50609923	.SCREW, DRAIN PLUG.....	1
4	XDOZZ		0X0J8	51922SD	.SCREW, DRAIN PLUG.....	1
UOC: FNR						
5	PBOZZ	4010012621354	00333	50609921	.CHAIN ASSEMBLY DRAIN PLUG	1
5	XBOZZ		10068	11855	.CHAIN ASSEMBLY DRAIN PLUG	1
UOC: FNR						
6	XDOZZ		00333	50609922	.PLUG, DRAIN COVER PLATE-	1
6	XDOZZ		0A6K1	M52618/7P09XC	.PLUG, 2 INCH DRAIN	1
UOC: FMC, FMD, FNR						
7	PAOZZ	5331002913085	96906	MS29513-250	.O-RING	1
8	XBOOO		0X0J8	51922AD	DRAIN FITTING, 2INCH.....	2
UOC: FMC, FMD, FNR						
8	XBOOO		A245B	006-28406	DRAIN FITTING, 2INCH	2
UOC: ENQ						

END OF FIGURE

1
2 thru 8

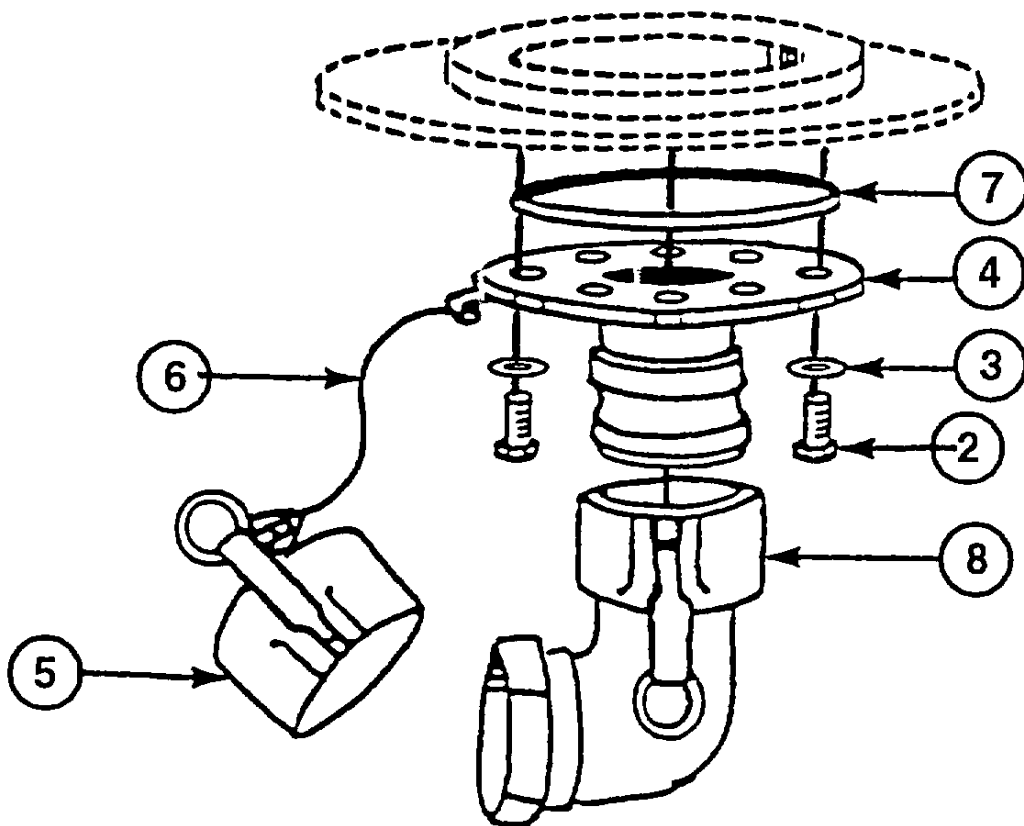


Figure 13. Drain Fitting Assembly

SECTION II

TM 5-5430-219-23P

(1) ITEM NO	(2) SMR CODE	(3) NSN	(4) CAGEC	(5) PART NUMBER	(6) DESCRIPTION AND USABLE ON CODES (UOC)	(7) QTY
GROUP 07 FITTING ASSEMBLY, DRAIN FIG. 13 DRAIN FITTING ASSEMBLY						
1	XDOOO		66618	X-4775	DRAIN FITTING ASSY	10
					UOC: FCM, FCN	
2	PAOZZ	5305002253843	80204	B1821BH025C100N	.SCREW, CAP, HEXAGON H 1/4-20 X 1 IN.	8
					UOC: FCM, FCN	
3	PBOZZ	5310008094058	96906	MS27183-10	.WASHER, FLAT 1/4 IN	8
					UOC: FCM, FCN	
4	XBOZZ		10068	MS27023-21	.ADAPTER, FLANGED 2 IN	1
					UOC: FCM, FCN	
5	PBOOZ	4730009290787	96906	MS27028-15	.CAP, QUICK DISCONNEC DUST CAP	1
					UOC: FCN	
6	PBOZZ	4010012621354	00333	50609921	..CHAIN ASSEMBLY DUST CAP SECURITY	1
					CHAIN	
					UOC: FCM, FCN	
7	PCOZZ	5331002913085	96906	MS29513-250	.O-RING	1
					UOC: FCM, FCN	
8	XBOZZ		10068	13228E9842-4	.COUPLING HALF QUICK FEMALE	1
					INTERNAL THREADS	
					UOC: FCM, FCN	

END OF FIGURE

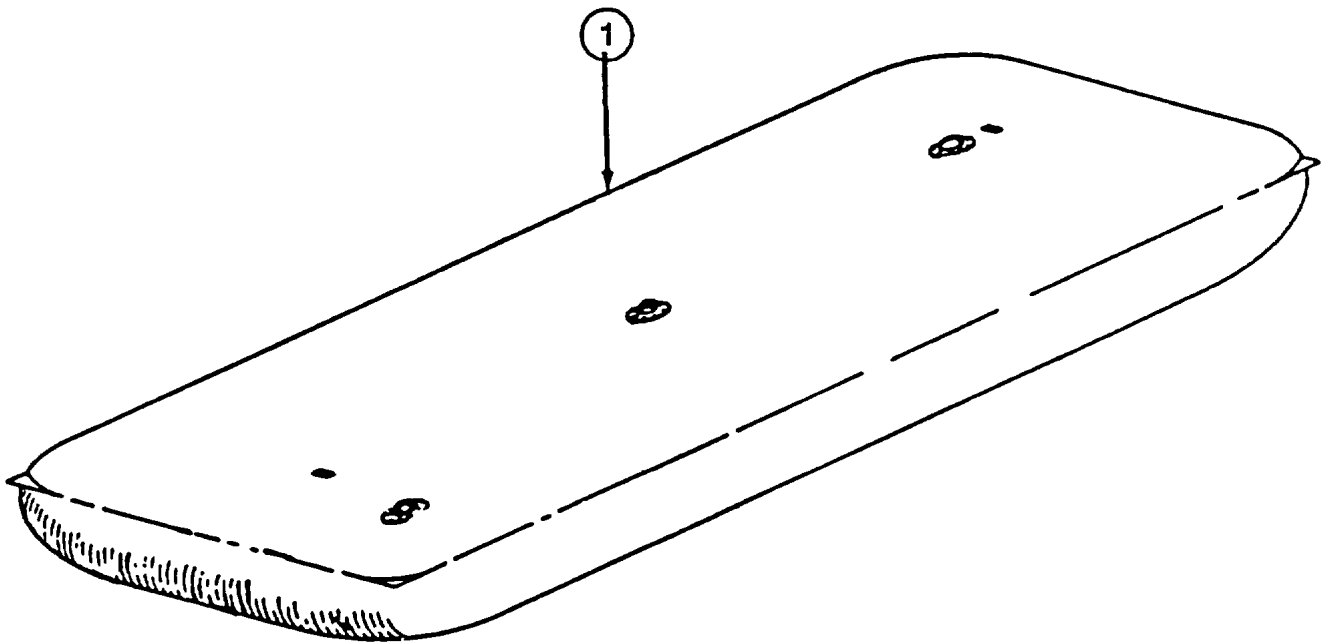


Figure 14. Tank

SECTION II

TM 5-5430-219-23P

(1) ITEM NO	(2) SMR CODE	(3) NSN	(4) CAGEC	(5) PART NUMBER	(6) DESCRIPTION AND USABLE ON CODES (UOC)	(7) QTY
					GROUP 08 TANK FIG. 14 TANK	
1	PBOFF		81349	M52983-03	TANK, 3K UOC: ECY	1
1	PBOFF		00333	MHW-64	TANK, 50K UOC: EDC, EDD	1
1	PBOFF		66618	SM 1855-01	TANK, 20K UOC: ELS, FCM	1
1	PBOFF		66618	EM491141-001	TANK, FABRIC, COLLAPS 10K GALLON, PETROLEUM UOC: FCN	1
1	PBOFF		81349	M52983FX-1114L-1	TANK, FABRIC, COLLAPS 20K GALLON, PETROLEUM UOC: FMC	1
1	PBOFF		81349	M52983FX-3617D-1	TANK, FABRIC, COLLAPS 10K GALLON, PETROLEUM UOC: EQB, EQC, FMD	1
1	PBOFF		0X0J8	WTM3KF-1	TANK, 3K UOC: FNR	1
1	PBOFF		00333	FCE-65880-3	TANK, 5K UOC: ENQ	1

END OF FIGURE

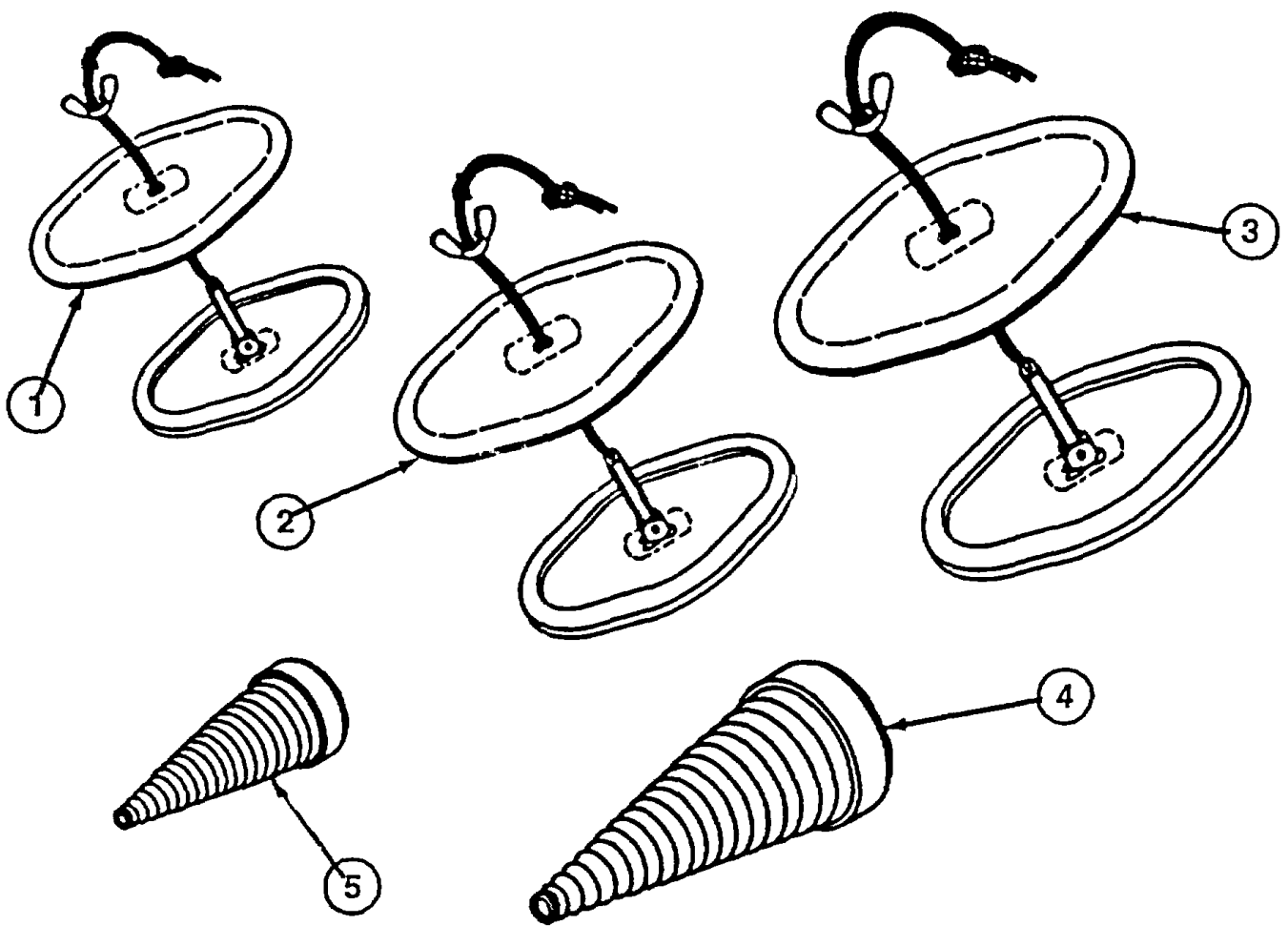


Figure 15. Emergency Repair Items

SECTION II

TM 5-5430-219-23P

(1) ITEM NO	(2) SMR CODE	(3) NSN	(4) CAGEC	(5) PART NUMBER	(6) DESCRIPTION AND USABLE ON CODES (UOC)	(7) QTY
GROUP 09 REPAIR ITEMS, EMERGENCY						
FIG. 15 EMERGENCY REPAIR ITEMS						
1	KFOZZ	5342007208864	81336	13202E2870-1	.PATCH, MECHANICAL, FL PART OF KIT P/N MILR22368 PART OF KIT P/N MILR52255	1
2	KFOZZ	5342007208863	81336	13202E2870-2	.PATCH, MECHANICAL, FL PART OF KIT P/N MILR22368 PART OF KIT P/N MILR52255	1
3	KFOZZ	5342007208858	81336	13202E2870-3	.PATCH, MECHANICAL, FL PART OF KIT P/N MILR22368 PART OF KIT P/N MILR52255	1
4	KFOZZ		81336	13211E3084	.PLUG, REPAIR, 5 IN PART OF KIT P/N MILR22368 PART OF KIT P/N MILR52255.....	1
5	KFOZZ		81336	13211E3085	.PLUG, REPAIR, 3 IN PART OF KIT P/N MILR22368 PART OF KIT P/N MILR52255.....	2
					PATCH, MECHANICAL, FL (1) 15-1	
					PATCH, MECCANICAL, FL (1) 15-2	
					PATCH, MECHANICAL, FL (1) 15-3	
					PLUG, REPAIR, 5 IN (1) 15-4	
					PLUG, REPAIR, 3 IN (2) 15-5	
					PATCH, MECHANICAL, FL (1) 15-1	
					PATCH, MECHANICAL, FL (1) 15-2	
					PATCH, MECHANICAL, FL (1) 15-3	
					PLUG, REPAIR, 5 IN (1) 15-4	
					PLUG, REPAIR, 3 IN (2) 15-5	

END OF FIGURE

CROSS-REFERENCE INDEXES

NATIONAL STOCK NUMBER INDEX

STOCK NUMBER	FIG.	ITEM	STOCK NUMBER	FIG.	ITEM
5305-00-068-0509	10	21	4730-00-889-2378	1	12
5310-00-087-7493	1	9	4730-00-889-2380	1	10
	3	10	5330-00-899-4509	1	2
	5	9		3	3
5330-00-088-9166	1	2		5	2
	6	2		6	2
5305-00-225-3843	11	4		11	3
	12	1		11	10
	13	2	4730-00-929-0787	1	1
5331-00-291-3085	10	24		6	5
	12	7		13	5
	13	7	4730-00-929-0790	1	5
4010-00-360-0596	1	3		6	4
	3	4	4730-00-951-3293	6	3
	5	3	5330-01-067-3449	11	6
	11	8	4820-01-076-8018	4	
4820-00-595-1841	7		5342-01-077-3664	4	5
5330-00-612-2414	10	15	4820-01-090-0877	4	
	10	18	5310-01-262-1337	2	3
5310-00-637-9541	1	7	5360-01-262-1338	2	4
	3	8	5365-01-262-1339	2	6
	5	7	5330-01-262-1340	2	11
	11	12	4820-01-262-1341	2	12
4730-00-640-6156	1	1	5305-01-262-1343	2	13
	3	2	4820-01-262-1344	2	16
	5	1	5310-01-262-1345	7	1
	6	5	5310-01-262-1346	7	4
	11	7	4820-01-262-1347	7	8
4730-00-640-6188	1	5	4820-01-262-1348	7	9
	3	6	5330-01-262-1349	10	6
	5	5	5430-01-262-1350	10	3
	6	4	5310-01-262-1351	10	5
4730-00-649-9100	10	17	5320-01-262-1352	10	9
5305-00-725-2317	1	8	5320-01-262-1353	10	10
	11	13	4010-01-262-1354	12	5
5310-00-732-0558	1	6		13	6
	3	7	5310-01-262-1359	2	1
	5	6	5310-01-262-1360	2	7
	11	11	5330-01-262-1361	10	1
4930-00-734-0180	10		5330-01-262-1362	7	6
5310-00-809-4058	10	22	5330-01-262-1363	2	5
	11	5	5330-01-262-1364	7	5
	12	2	5305-01-262-1365	2	8
	13	3	4820-01-262-1366	2	14
4730-00-840-5347	1	10	4820-01-262-5079	1	
	3	11	5305-01-262-5080	10	4
4730-00-840-5348	1	12	5330-01-262-5120	1	11
	3	13		3	12
	5	12		5	11
5330-00-874-3744	11	15		11	17

STOCK NUMBER	FIG.	ITEM	STOCK NUMBER	FIG.	ITEM
4820-01-262-5121	2	15			
4720-01-262-5146	6	1			
5430-01-262-9475	10	13			
5310-01-265-5044	2	9			
5330-01-280-9388	1	11			
5305-01-325-8387	3	9			
	5	8			
5330-01-381-2809	4	8			

PART NUMBER INDEX

CAGEC	PART NUMBER	STOCK NUMBER	FIG.	ITEM
80204	B1821BH025C100N	5305-00-225-3843	11	4
			12	1
			13	2
76364	C-35551		2	
66618	C0317-4NA		3	1
0A6K1	D102408		6	1
49234	EX1333B	4930-00-734-0180	10	
49234	EX1333B-1-607		10	12
49234	EX1333B-17-133	5310-01-262-1351	10	5
49234	EX1333B-18-95	5330-01-262-1361	10	1
49234	EX1333B-3-607		10	11
49234	EX1333B-36-13		10	2
49234	EX1333B-38	5430-01-262-1350	10	3
49234	EX1333B-39		10	8
49234	EX1333B-40-68		10	7
0A6K1	FB7661-A		11	17
00333	FCE-65880-3		14	1
9H113	H06683M	4010-00-360-0596	3	4
			5	3
81718	H6683M	4010-00-360-0596	1	3
			10	19
			11	8
00333	MHW-64		14	1
81349	MIL-T-52983F-BVA		5	
66618	MM91141-001		14	1
96906	MS27023-15	4730-00-889-2380	1	10
96906	MS27023-17	4730-00-840-5347	1	10
			3	11
			5	10
			11	18
96906	MS27023-21		10	23
			13	4
96906	MS27024-11		10	14
96906	MS27027-15	4730-00-889-2378	1	12
96906	MS27027-17	4730-00-840-5348	1	12
			3	13
			5	12
96906	MS27028-11	4730-00-649-9100	10	17
96906	MS27028-15	4730-00-929-0787	1	1
			6	5
			13	5
96906	MS27028-17	4730-00-640-6156	1	1
			3	2
			5	1
			6	5
			11	7
96906	MS27029-15	4730-00-929-0790	1	5
			6	4
96906	MS27029-17	4730-00-640-6188	1	5
			3	6
			5	5

CROSS-REFERENCE INDEXES

PART NUMBER INDEX

CAGEC	PART NUMBER	STOCK NUMBER	FIG.	ITEM
96906	MS27029-17	4730-00-640-6188	6	4
96906	MS27030-6	5330-00-612-2414	10	15
			10	18
96906	MS27030-8	5330-00-088-9166	1	2
			6	2
96906	MS27030-9	5330-00-899-4509	1	2
			3	3
			5	2
			6	2
			11	3
			11	10
96906	MS27183-10	5310-00-809-4058	10	22
			11	5
			12	2
			13	3
96906	MS27183-13	5310-00-087-7493	1	9
			3	10
			5	9
96906	MS29513-250	5331-00-291-3085	10	24
			12	7
			13	7
96906	MS29513-383	5330-01-067-3449	11	6
96906	MS35338-46	5310-00-637-9541	1	7
			3	8
			5	7
			11	12
96906	MS49000-1	4730-00-951-3293	6	3
96906	MS51967-8	5310-00-732-0558	1	6
			3	7
			5	6
			11	11
96906	MS90725-64	5305-01-325-8387	3	9
			5	8
96906	MS90728-10	5305-00-068-0509	10	21
96906	MS90728-64	5305-00-725-2317	1	8
			11	13
0A6K1	M52618/7P09XC		12	6
81349	M52983-03		14	1
81349	M52983FX-1114L-1		14	1
81349	M52983FX-3617D-1		14	1
76364	P-2860H		4	1
76364	P-8449		4	4
66618	SM 1855-01		14	1
OX0J8	WTM3KF-1		14	1
66618	X-4775		13	1
76364	X-7993-N		4	18
A245B	006-28406		12	8
67060	009240-3	4820-00-595-1841	7	
10068	064-2204		11	1
10068	064-2304		11	2
10068	064-2400		10	16

CROSS-REFERENCE INDEXES

PART NUMBER INDEX

CAGEC	PART NUMBER	STOCK NUMBER	FIG.	ITEM
10068	064-2466		11	14
01976	1SK		1	4
			3	5
			5	4
			10	20
			11	9
76364	1148-1		7	10
76364	1148-10	5310-01-262-1345	7	1
76364	1148-2		7	7
76364	1148-3	4820-01-262-1347	7	8
76364	1148-4	4820-01-262-1348	7	9
76364	1148-5	5330-01-262-1362	7	6
76364	1148-6	5330-01-262-1364	7	5
76364	1148-7	5310-01-262-1346	7	4
76364	1148-8		7	3
76364	1148-9		7	2
10068	11855		10	19
			11	8
			12	5
81336	13202E2870-1		15	1
81336	13202E2870-2		15	2
81336	13202E2870-3		15	3
81336	13211E3084		15	4
81336	13211E3085		15	5
10068	13228E9842-4		13	8
76364	1726-N		4	19
49234	205-18-95	5330-01-262-1349	10	6
76364	2093-7		2	19
0A6K1	2222191		8	1
76364	23194-L		2	10
41592	235-RF		2	
41592	235RF-0201MB		2	19
41592	235RF-0202MB		2	10
41592	235RF-0203MS	4820-01-262-1341	2	12
41592	235RF-02043A		2	2
41592	235RF-02052N	5310-01-262-1359	2	1
41592	235RF-020621	5330-01-262-1363	2	5
41592	235RF-020721	5310-01-262-1337	2	3
41592	235RF-02082P	5365-01-262-1339	2	6
41592	235RF-02092G	5330-01-262-1340	2	11
41592	235RF-0210MD	4820-01-262-1366	2	14
41592	235RF-0212MD	4820-01-262-5121	2	15
41592	235RF-0215MR		2	18
41592	235RF-02162S	5360-01-262-1338	2	4
41592	235RF-0217MR	4820-01-262-1344	2	16
41592	235RF-02182S	5305-01-262-1343	2	13
41592	235RF-02192S	5305-01-262-1365	2	8
41592	235RF-02202N	5310-01-262-1360	2	7
41592	235RF-02212W	5310-01-265-5044	2	9
74897	239-20023-01		6	1
76364	26264-L		2	12

CROSS-REFERENCE INDEXES

PART NUMBER INDEX

CAGEC	PART NUMBER	STOCK NUMBER	FIG.	ITEM
76364	26399-N		4	14
76364	26462-N		4	9
76364	2864-L		2	3
0A6K1	29001		8	18
0A6K1	29002		8	10
0A6K1	29003		8	15
0AK61	29004		8	16
0A6K1	29005		8	17
0A6K1	29006		8	13
0A6K1	29007		8	9
0AK61	29008		8	14
0A6K1	29009		8	11
0A6K1	29010A		8	7
0A6K1	29010B		8	12
0A6K1	29011		8	6
0A6K1	29012		8	5
0A6K1	29013		8	8
0A6K1	29014		8	2
0AK61	29015		8	3
0A6K1	29016		8	4
76364	3042-L		2	17
76364	3116-M		2	1
76364	363-G		2	5
76364	38084-B		2	9
76364	38194-N		4	17
0A6K1	4IN-CS15-F		5	13
49234	4201035000	5320-01-262-1353	10	10
49234	4201232400	5320-01-262-1352	10	9
76364	42136-N		4	6
76364	4247-E		2	8
49234	4447101620	5305-01-262-5080	10	4
76364	45199-N		4	7
00333	50608694		9	1
00333	50609362		11	1
00333	50609735	5330-01-262-5120	1	11
			3	12
			5	11
			11	17
00333	50609764	4820-01-262-5079	1	
00333	50609780	5430-01-262-9475	10	13
00333	50609789		11	2
00333	50609818		11	14
00333	50609892	4720-01-262-5146	6	1
00333	50609921	4010-01-262-1354	12	5
			13	6
00333	50609922		12	6
00333	50609923		12	4
00333	50609926		12	3
00333	50609928		10	16
00333	50862063		11	16
0X0J8	519218P		11	16

CROSS-REFERENCE INDEXES

PART NUMBER INDEX

CAGEC	PART NUMBER	STOCK NUMBER	FIG.	ITEM
0X00B	51922AD		12	8
0X0J8	51922D		12	3
0X0J8	51922SD		12	4
76364	5988-N		4	3
76364	5996-R		4	13
76364	6593-L		2	6
76364	6595-N	5330-01-381-2809	4	8
76364	6596-B		4	11
			4	15
74897	66108-L	5330-01-280-9388	1	11
76364	66150-N		4	10
76364	66173-L		2	11
76364	70170-N	5342-01-077-3664	4	5
76364	70171-L		2	4
76364	7410-N		4	12
76364	7411-N		4	16
83259	7500-3/8	5330-00-874-3744	11	15
76364	7699-K		2	2
41592	780-0100AC		10	
41592	780-0100AC-1		10	13
41592	780-0100AC-10		10	1
41592	780-0100AC-11		10	3
41592	780-0100AC-3		10	9
41592	780-0100AC-4		10	7
41592	780-0100AC-5		10	6
41592	780-0100AC-6		10	5
41592	780-0100AC-7		10	4
41592	780-0100AC-8		10	10
41592	780-0100AC-9		10	11
76364	7959-D		4	2
76364	8621-N	4820-01-090-0877	4	
76364	869-N	4820-01-076-8018	4	


By Order of the Secretary of the Army:

Official.

ERIC K. SHINSEKI
General, United States Army
Chief of Staff

JOEL B. HUDSON
Administrative Assistant to the
Secretary of the Army
0010401

DISTRIBUTION. To be distributed in accordance with the Initial Distribution Number (IDN) 253830 requirements for TM 5-5430-219-23P.

 <div style="border: 1px solid black; padding: 5px; display: inline-block; margin-top: 10px;"> <p style="font-size: small; margin: 0;">THEN . . . JOT DOWN THE DOPE ABOUT IT ON THIS FORM. CAREFULLY TEAR IT OUT. FOLD IT AND DROP IT IN THE MAIL!</p> </div>		SOMETHING WRONG		WITH THIS PUBLICATION?
		FROM: (PRINT YOUR UNIT'S COMPLETE ADDRESS)		Your Mailing Address
		DATE SENT		Date you filled out this form
PUBLICATION NUMBER		PUBLICATION DATE		PUBLICATION TITLE
TM X-XXXX-XXX-XXX		Date of TM		Title of TM
BE EXACT. . . PIN-POINT WHERE IT IS			IN THIS SPACE TELL WHAT IS WRONG AND WHAT SHOULD BE DONE ABOUT IT:	
PAGE NO.	PARA-GRAPH	FIGURE NO.	TABLE NO.	
3-193		2		Step No. 1 says to connect LH 4 SPNSN Unit-8 hose from where to what? It is also not identified.
3-227				Procedure is continued from another page, but cap is not removed - add step to procedure.
PRINTED NAME, GRADE OR TITLE, AND TELEPHONE NUMBERS			SIGN HERE:	
Doe, John, CPL 755-1313			CPL John Doe	

SAMPLE

SAMPLE

FILL IN YOUR
UNIT'S ADDRESS



FOLD BACK

DEPARTMENT OF THE ARMY

CPL John Doe

APO NY

OFFICIAL BUSINESS
PENALTY FOR PRIVATE USE \$300

POSTAGE AND FEES PAID
DEPARTMENT OF THE ARMY
DoD 314

Commander
U.S. Army Tank-automotive and Armaments Command
ATTN: AMSTA-AC-NML
Rock Island, IL 61299-7630

TEAR ALONG PERFORATED LINE



THEN . . . JOT DOWN THE DOPE ABOUT IT ON THIS FORM. CAREFULLY TEAR IT OUT. FOLD IT AND DROP IT IN THE MAIL!

SOMETHING WRONG

WITH THIS PUBLICATION?

FROM: (PRINT YOUR UNIT'S COMPLETE ADDRESS)

DATE SENT

PUBLICATION NUMBER

TM 5-5430-219-23P

PUBLICATION DATE

31 January 00

PUBLICATION TITLE

Tank, Fabric, Collapsible POL

BE EXACT. . . PIN-POINT WHERE IT IS

PAGE NO.	PARA-GRAPH	FIGURE NO.	TABLE NO.

IN THIS SPACE TELL WHAT IS WRONG AND WHAT SHOULD BE DONE ABOUT IT:

PRINTED NAME, GRADE OR TITLE, AND TELEPHONE NUMBERS

SIGN HERE:

FILL IN YOUR
UNIT'S ADDRESS



FOLD BACK

DEPARTMENT OF THE ARMY

OFFICIAL BUSINESS
PENALTY FOR PRIVATE USE \$300

POSTAGE AND
DEPARTMENT C
DoD 5

PLACE
POSTAGE
HERE

TEAR ALONG PERFORATED LINE

Commander
U.S. Army Tank-automotive and Armaments Command
ATTN: AMSTA-AC-NML
Rock Island, IL 61299-7630

THE METRIC SYSTEM AND EQUIVALENTS

LINEAR MEASURE

1 Centimeter = 10 Millimeters = 0.01 Meters = 0.3937 Inches
 1 Meter = 100 Centimeters = 1000 Millimeters = 39.37 Inches
 1 Kilometer = 1000 Meters = 0.621 Miles

WEIGHTS

1 Gram = 0.001 Kilograms = 1000 Milligrams = 0.035 Ounces
 1 Kilogram = 1000 Grams = 2.2 Lb
 1 Metric Ton = 1000 Kilograms = 1 Megagram = 1.1 Short Tons

LIQUID MEASURE

1 Milliliter = 0.001 Liters = 0.0338 Fluid Ounces
 1 Liter = 1000 Milliliters = 33.82 Fluid Ounces

SQUARE MEASURE

1 Sq. Centimeter = 100 Sq. Millimeters = 0.155 Sq. Inches
 1 Sq. Meter = 10,000 Sq. Centimeters = 10.76 Sq. Feet
 1 Sq. Kilometer = 1,000,000 Sq. Meters = 0.386 Sq. Miles

CUBIC MEASURE

1 Cu Centimeter = 1000 Cu Millimeters = 0.06 Cu Inches
 1 Cu Meter = 1,000,000 Cu Centimeters = 35.31 Cu. Feet

TEMPERATURE

$5/9 (°F - 32) = °C$
 212° Fahrenheit is equivalent to 100° Celsius
 90° Fahrenheit is equivalent to 32° Celsius
 32° Fahrenheit is equivalent to 0° Celsius
 $9/5 (°C + 32) = °F$

APPROXIMATE CONVERSION FACTORS

TO CHANGE

Inches
 Feet
 Yards
 Miles
 Square Inches
 Square Feet
 Square Yards
 Square Miles
 Acres
 Cubic Feet
 Cubic Yards
 Fluid
 Pints
 Quarts
 Quarts
 Gallons
 Ounces
 Pounds
 Short Tons
 Pound-Feet
 Pounds per Square Inch
 Miles per Gallon
 Miles per Hour

TO

Centimeters
 Meters
 Meters
 Kilometers
 Square Centimeters
 Square Meters
 Square Meters
 Square Kilometers
 Square Hectometers
 Cubic Meters
 Cubic Meters
 Ounces Milliliters
 Liters
 Liters
 Liters
 Liters
 Grams
 Kilograms
 Metric Tons
 Newton-Meters
 Kilopascals
 Kilometers per Liter
 Kilometers per Hour

MULTIPLY BY

2.540
 0.305
 0.914
 1.609
 6.451
 0.093
 0.836
 2.590
 0.405
 0.028
 0.765
 29.573
 0.473
 0.946
 0.946
 3.785
 28.349
 0.45
 0.0907
 1.356
 6.895
 0.425
 1.609

TO CHANGE

Centimeters
 Meters
 Meters
 Meters
 Kilometers
 Square Centimeters
 Square Meters
 Square Meters
 Square Kilometers
 Square Hectometers
 Cubic Meters
 Cubic Meters
 Milliliters Fluid
 Liters
 Liters
 Liters
 Grams
 Kilograms
 Metric Tons
 Newton-Meters
 Kilopascals
 Kilometers per Liter
 Kilometers per Hour

TO

Inches
 Feet
 Yards
 Yards
 Miles
 Square Inches
 Square Feet
 Square Yards
 Square Miles
 Acres
 Cubic Feet
 Cubic Yards
 Ounces
 Pints
 Quarts
 Gallons
 Ounces
 Pounds
 Short Tons
 Pound-Feet
 Pounds per Square Inch
 Miles per Gallon
 Miles per Hour

MULTIPLY BY

0.394
 3.280
 1.094
 1.094
 0.621
 0.155
 10.764
 1.195
 0.386
 2.471
 35.315
 1.308
 0.034
 2.113
 1.057
 0.264
 0.035
 2.205
 1.102
 0.738
 0.145
 2.354
 0.621

